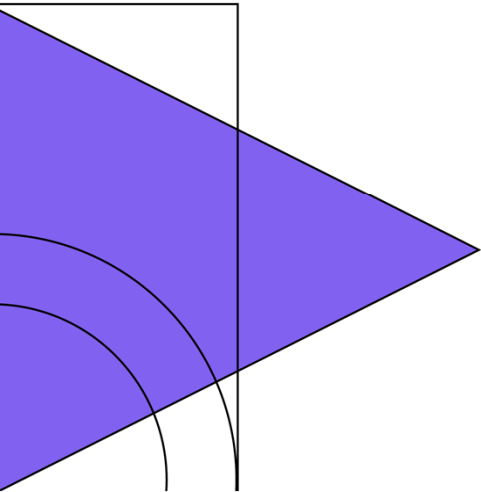
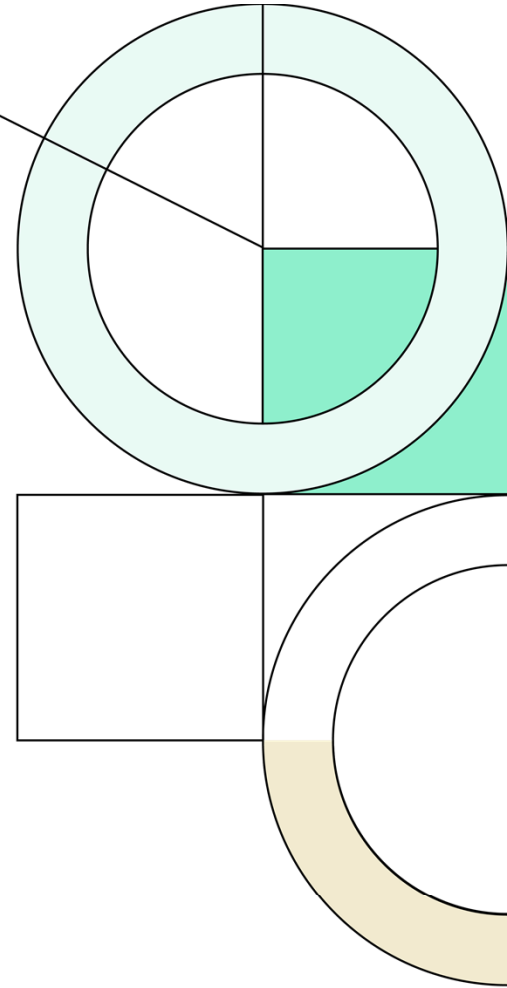




# College Station Independent School District

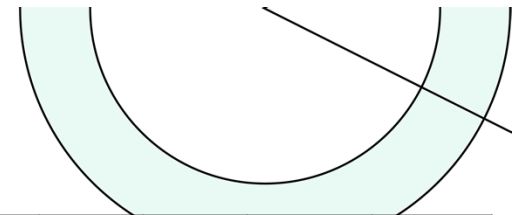
Fall 2021

Demographic Report





# Annual Enrollment Change



| Year    | EE  | PK  | K     | 1st   | 2nd   | 3rd   | 4th   | 5th   | 6th   | 7th   | 8th   | 9th   | 10th  | 11th  | 12th | Total  | Total Growth | Total % |
|---------|-----|-----|-------|-------|-------|-------|-------|-------|-------|-------|-------|-------|-------|-------|------|--------|--------------|---------|
| 2017/18 | 87  | 328 | 1,067 | 1,044 | 1,050 | 1,078 | 1,106 | 1,054 | 967   | 1,010 | 968   | 1,021 | 943   | 917   | 930  | 13,570 |              |         |
| 2018/19 | 141 | 355 | 963   | 1,019 | 977   | 1,036 | 1,073 | 1,081 | 1,048 | 982   | 998   | 1,059 | 991   | 910   | 907  | 13,540 | -30          | -0.2%   |
| 2019/20 | 142 | 425 | 1,032 | 1,015 | 1,019 | 1,011 | 1,024 | 1,091 | 1,104 | 1,079 | 994   | 1,103 | 1,014 | 982   | 901  | 13,936 | 396          | 2.9%    |
| 2020/21 | 95  | 384 | 986   | 1,025 | 942   | 980   | 998   | 1,005 | 1,053 | 1,089 | 1,064 | 1,066 | 1,053 | 958   | 966  | 13,664 | -272         | -2.0%   |
| 2021/22 | 77  | 449 | 1,052 | 1,050 | 1,062 | 962   | 1,008 | 1,029 | 1,040 | 1,104 | 1,111 | 1,205 | 1,049 | 1,018 | 993  | 14,209 | 545          | 4.0%    |

Yellow box = largest grade per year  
Green box = second largest grade per year

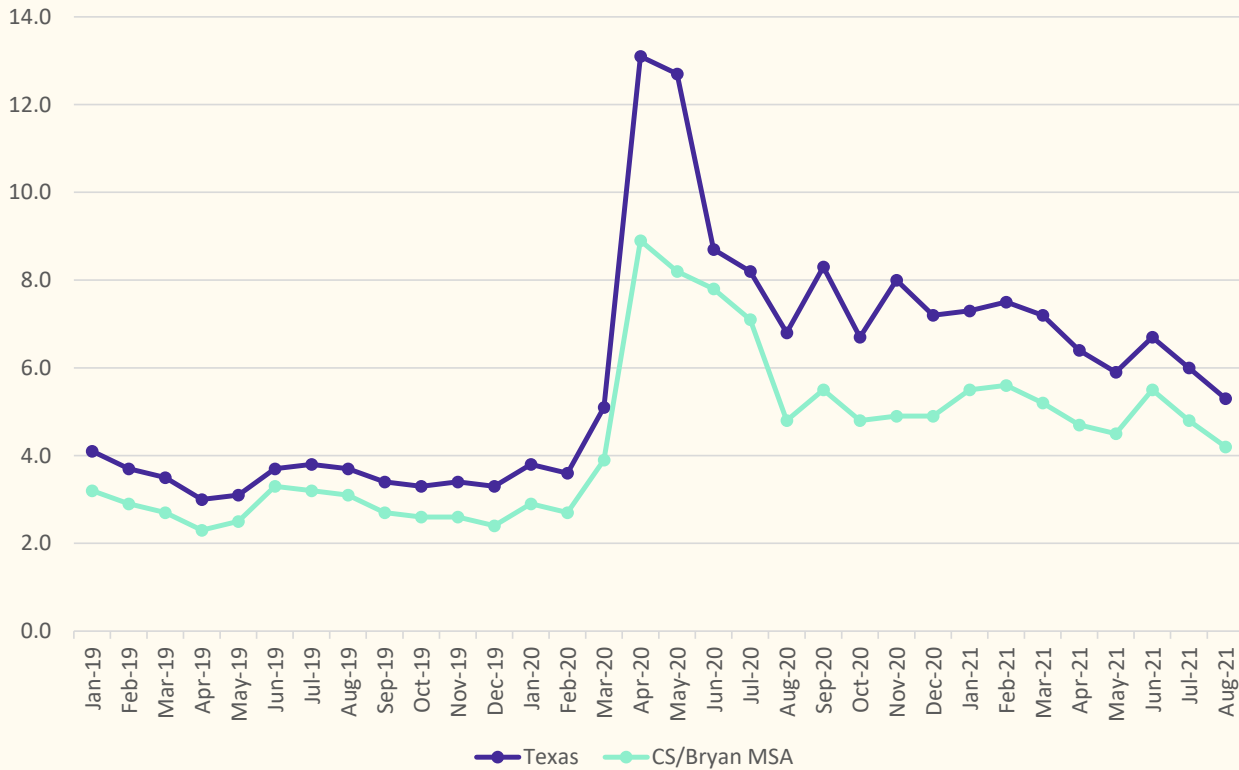
| Year        | EE    | PK    | K     | 1st   | 2nd   | 3rd   | 4th   | 5th   | 6th   | 7th   | 8th   | 9th   | 10th  | 11th  | 12th  | KG-4th | 5th-6th | 7th-8th | 9th-12th |
|-------------|-------|-------|-------|-------|-------|-------|-------|-------|-------|-------|-------|-------|-------|-------|-------|--------|---------|---------|----------|
| 3 Year Avg. | 0.829 | 1.090 | 1.031 | 1.037 | 0.988 | 1.006 | 1.001 | 1.010 | 1.007 | 1.021 | 1.006 | 1.103 | 0.965 | 0.967 | 1.003 | 1.013  | 1.008   | 1.014   | 1.010    |
| 2018/19     | 1.621 | 1.082 | 0.903 | 0.955 | 0.936 | 0.987 | 0.995 | 0.977 | 0.994 | 1.016 | 0.988 | 1.094 | 0.971 | 0.965 | 0.989 | 0.955  | 0.986   | 1.002   | 1.005    |
| 2019/20     | 1.007 | 1.197 | 1.072 | 1.054 | 1.000 | 1.035 | 0.988 | 1.017 | 1.021 | 1.030 | 1.012 | 1.105 | 0.958 | 0.991 | 0.990 | 1.030  | 1.019   | 1.021   | 1.011    |
| 2020/21     | 0.669 | 0.904 | 0.955 | 0.993 | 0.928 | 0.962 | 0.987 | 0.981 | 0.965 | 0.986 | 0.986 | 1.072 | 0.955 | 0.945 | 0.984 | 0.965  | 0.973   | 0.986   | 0.989    |
| 2021/22     | 0.811 | 1.169 | 1.067 | 1.065 | 1.036 | 1.021 | 1.029 | 1.031 | 1.035 | 1.048 | 1.020 | 1.133 | 0.984 | 0.967 | 1.037 | 1.044  | 1.033   | 1.034   | 1.030    |

- College Station ISD increased by 545 students in the fall of 2021 for an annual change of 4.0%
- CSISD saw the largest increase in early elementary enrollment and 9<sup>th</sup> grade due to recovery from the COVID-19 impact

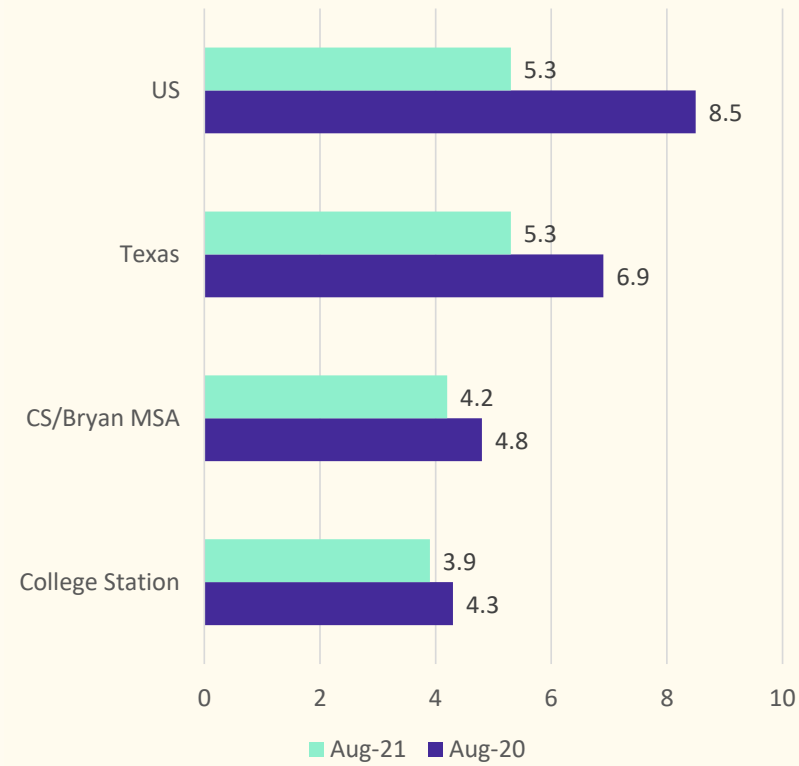


# Local Economic Conditions

### Unemployment Rate, Jan 2019 - Aug 2021



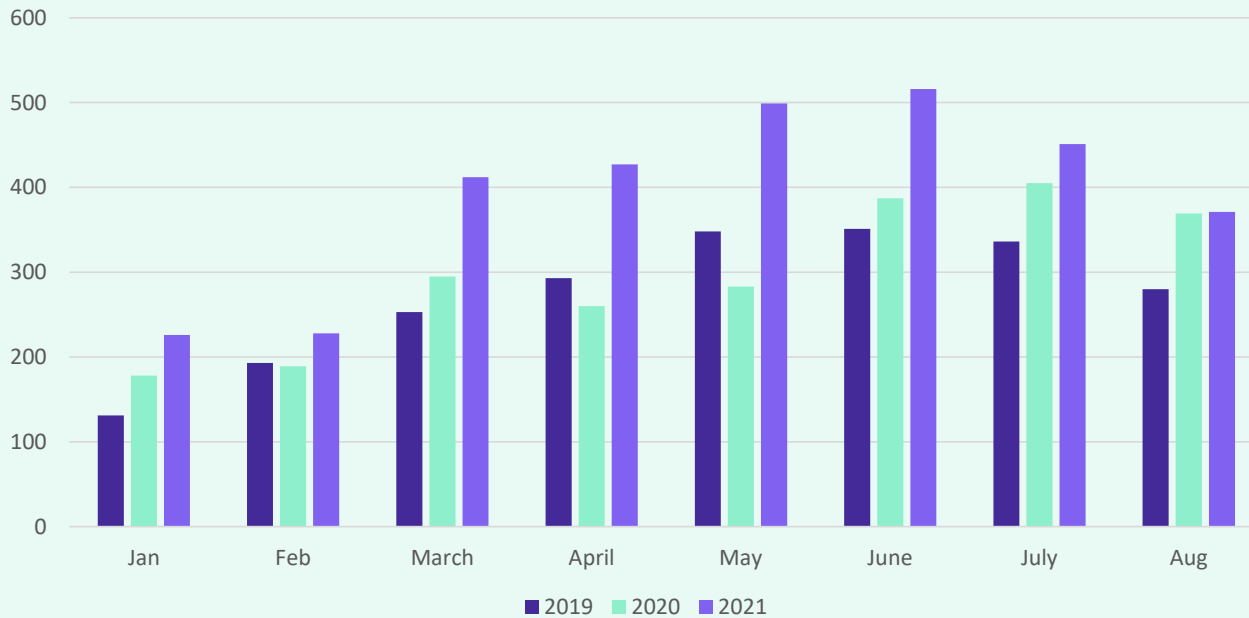
### Unemployment Rate, Year Over Year





# Housing Market Trends

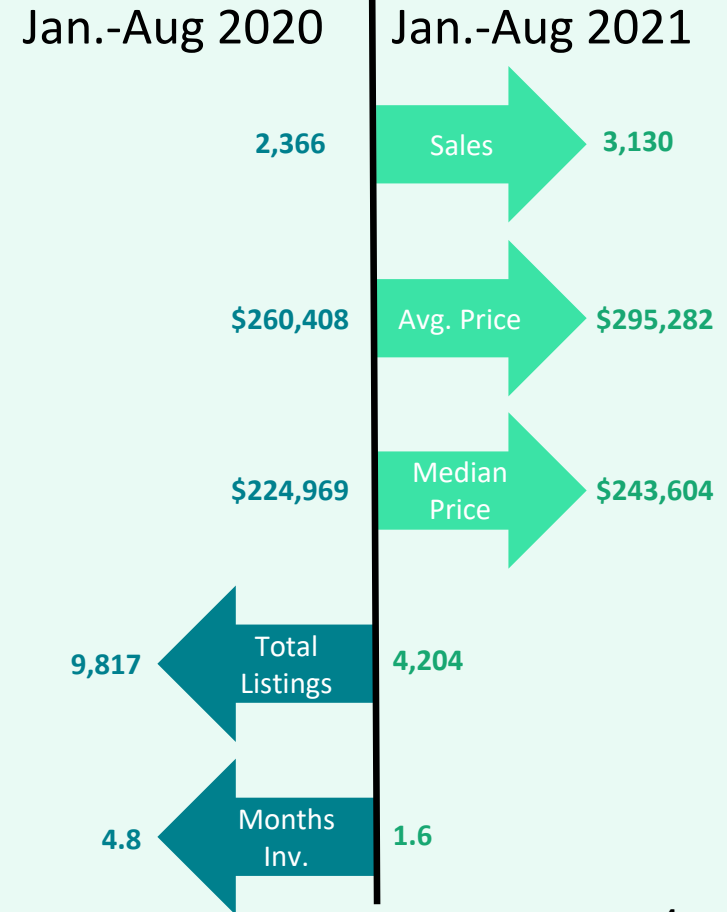
Monthly Home Sales



- Median home prices remains near record highs across the state
- Home inventory remains extremely tight as sales increased throughout the state, but inventory may rebound as builders and developers change sales trends
- So far in 2021, total monthly home sales rebounded and surpassed 2020 levels in College Station-Bryan MSA (+32.3%)
- Historically low interest rates and pent up demand have resulted in a fast recovery for the housing market



YOY Housing Trends



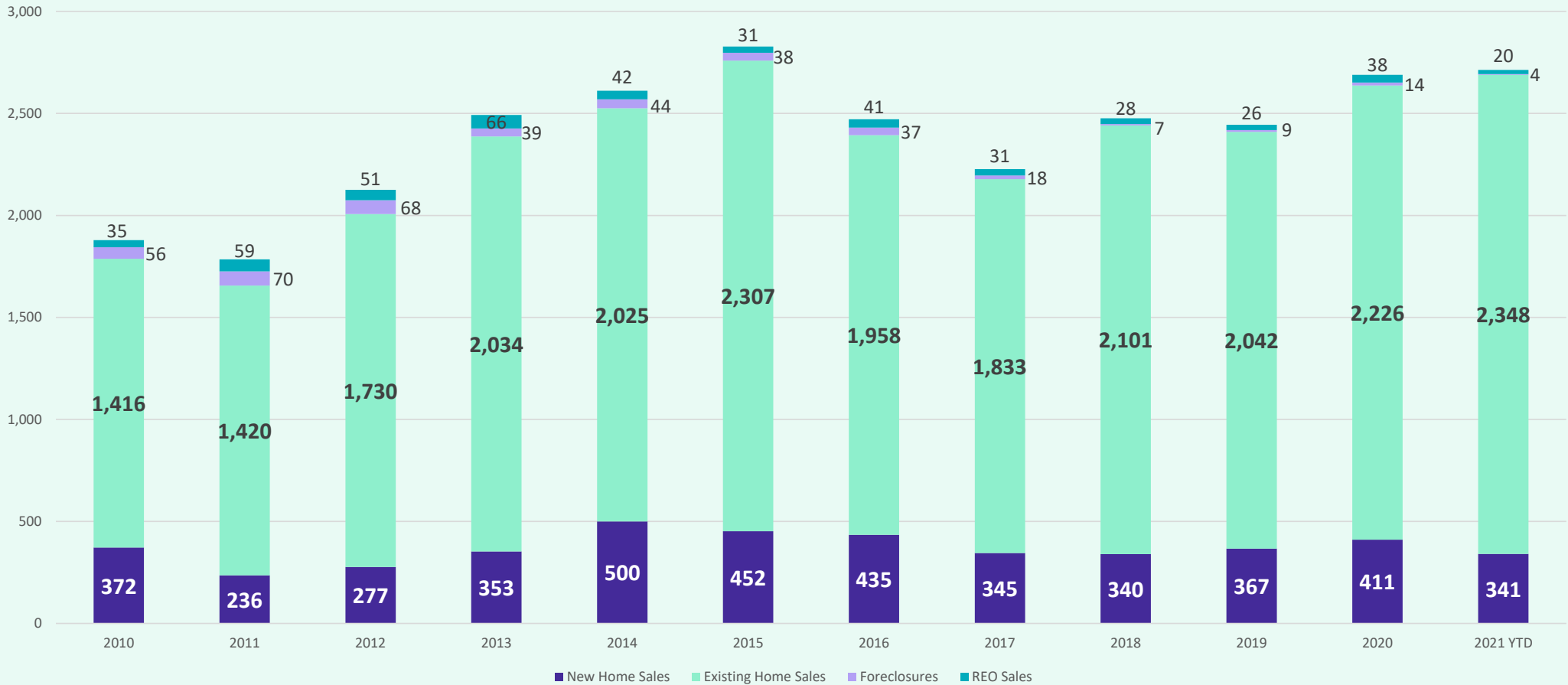


# CSISD Housing Market Analysis

Home Sales by Transaction Type, 2010 – Sept 2021



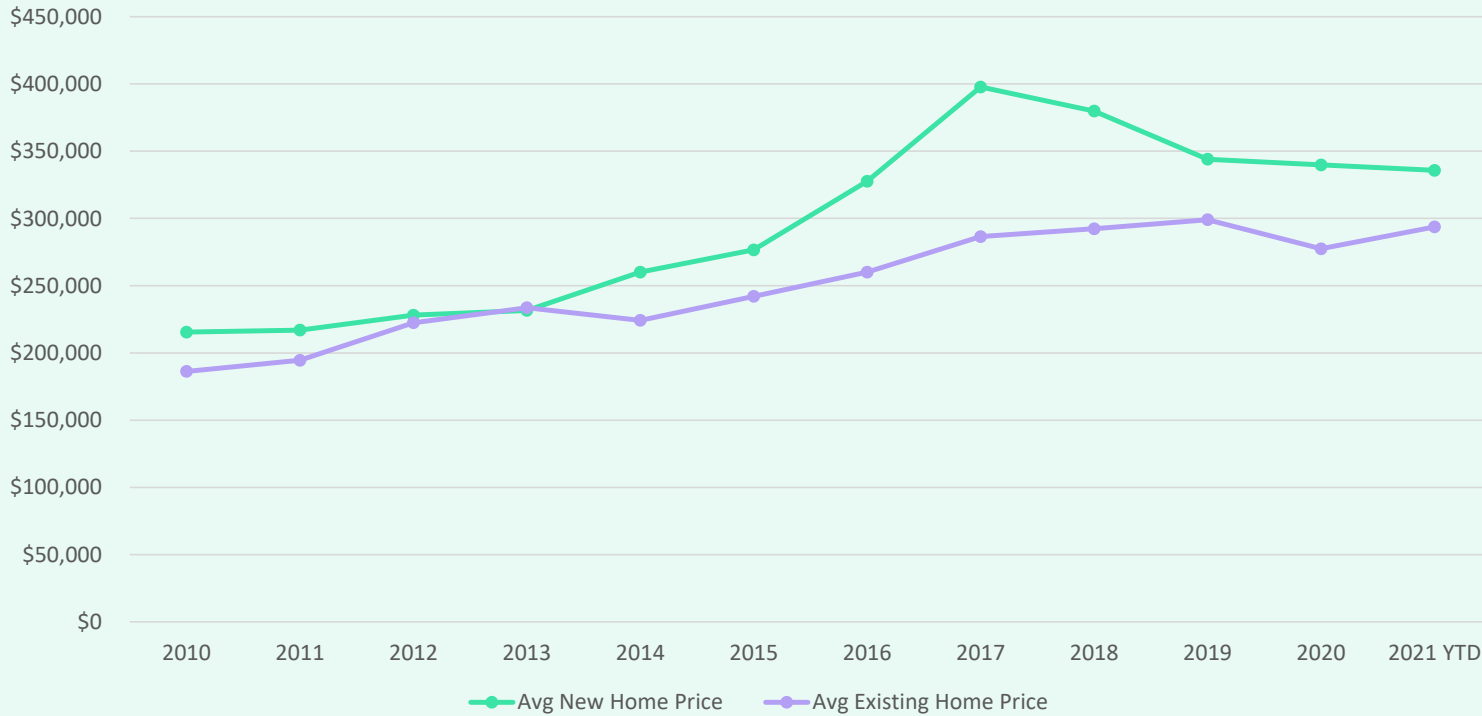
Annual District Home Sales



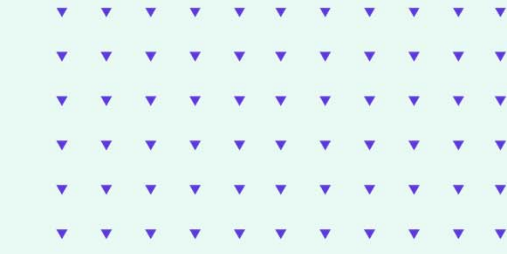
■ New Home Sales ■ Existing Home Sales ■ Foreclosures ■ REO Sales



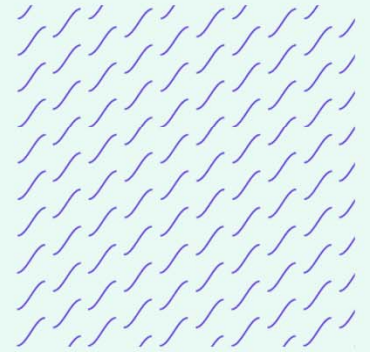
# CSISD Home Price Analysis



- The average new home sale price in College Station ISD has risen 56% in the last 10 years, an increase of more than \$120,200
- The average existing home sale price in CSISD has risen 58% since 2010, an increase of more than \$107,380



|      | Avg New Home | Avg Existing Home |
|------|--------------|-------------------|
| 2010 | \$215,456    | \$186,295         |
| 2011 | \$216,982    | \$194,550         |
| 2012 | \$228,113    | \$222,464         |
| 2013 | \$231,622    | \$233,600         |
| 2014 | \$260,084    | \$224,238         |
| 2015 | \$276,567    | \$242,051         |
| 2016 | \$327,686    | \$260,122         |
| 2017 | \$397,737    | \$286,535         |
| 2018 | \$379,826    | \$292,338         |
| 2019 | \$344,010    | \$299,031         |
| 2020 | \$339,770    | \$277,388         |
| 2021 | \$335,740    | \$293,677         |

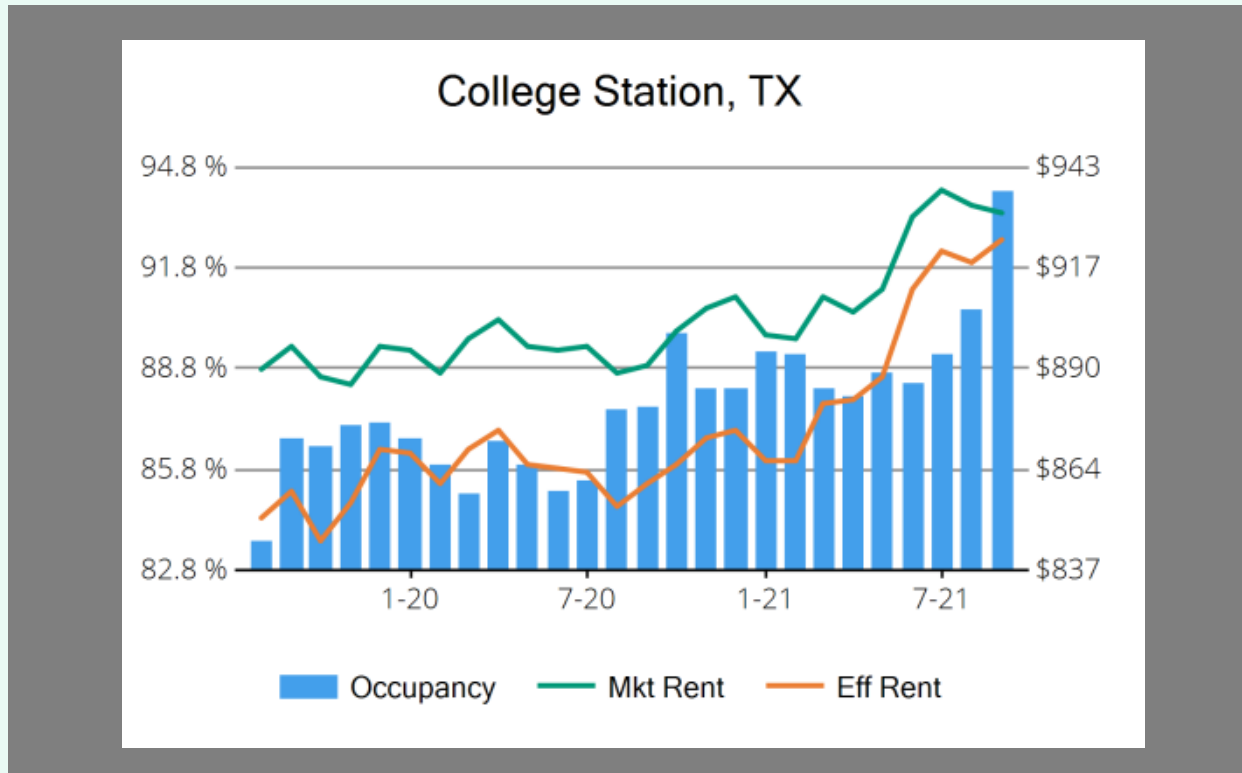




# Housing Market Trends: Multi-family Market



| College Station Multi-Family Market | Sept-21 | % YOY  |
|-------------------------------------|---------|--------|
| Occupancy                           | 94.1    | +5.5%  |
| Unit Change                         | 400     |        |
| Units Absorbed (Annual)             | 1,340   |        |
| Average Size                        | 832     | -0.1%  |
| Asking Rent                         | \$931   | +3.2%  |
| Asking Rent per Sq. Ft.             | \$1.12  | +3.3%  |
| Effective Rent                      | \$924   | +6.3%  |
| Effective Rent per SqFt             | \$1.11  | +6.4%  |
| % Offering Concessions              | 8%      | -76.1% |
| Avg Concession Package              | 6.2%    | -14.7% |



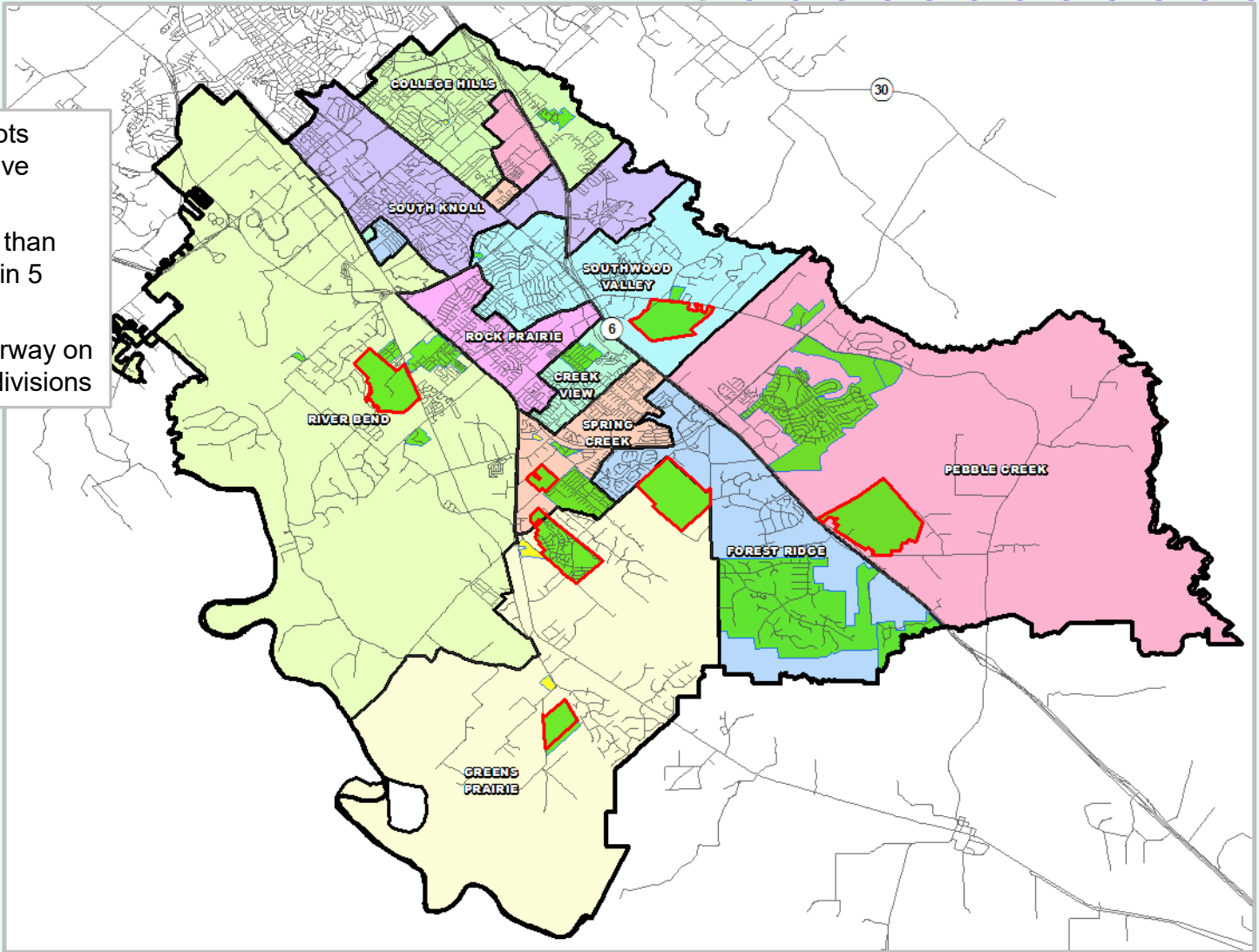


# District Housing Overview

- The district has approx. 845 lots available to build on in 23 active subdivisions
- Within CSISD there are more than 4,000 planned future lots within 5 future subdivisions
- Of these, groundwork is underway on approx. 230 lots within 7 subdivisions

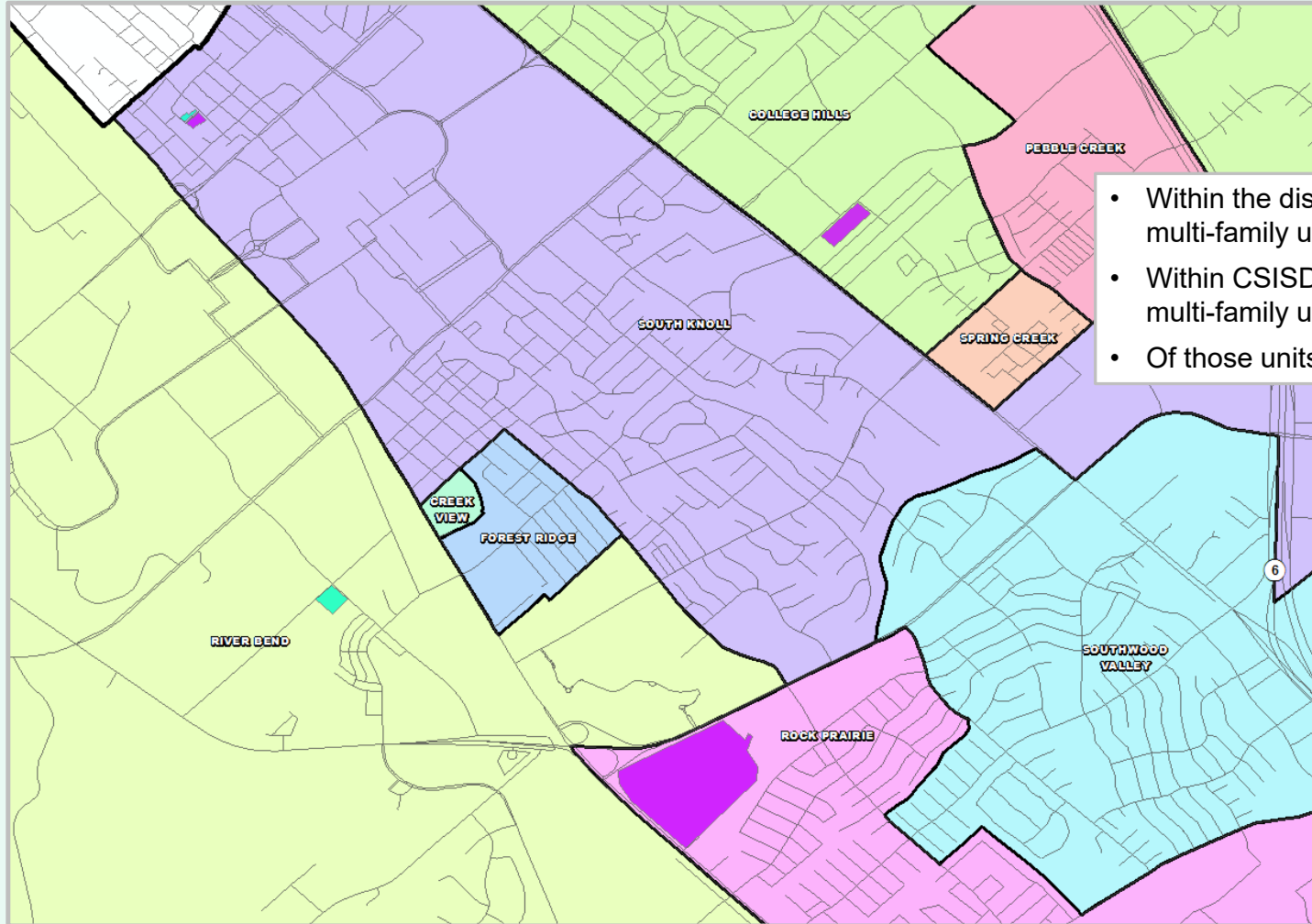
**Subdivisions**

- ACTIVE
- FUTURE
- Groundwork Underway





# Multi-Family Housing Overview



- Within the district there are approx. 959 multi-family units that are under construction
- Within CSISD there are roughly 146 future multi-family units in the planning stages
- Of those units, 432 units are student housing

**Multi-Family Developments**

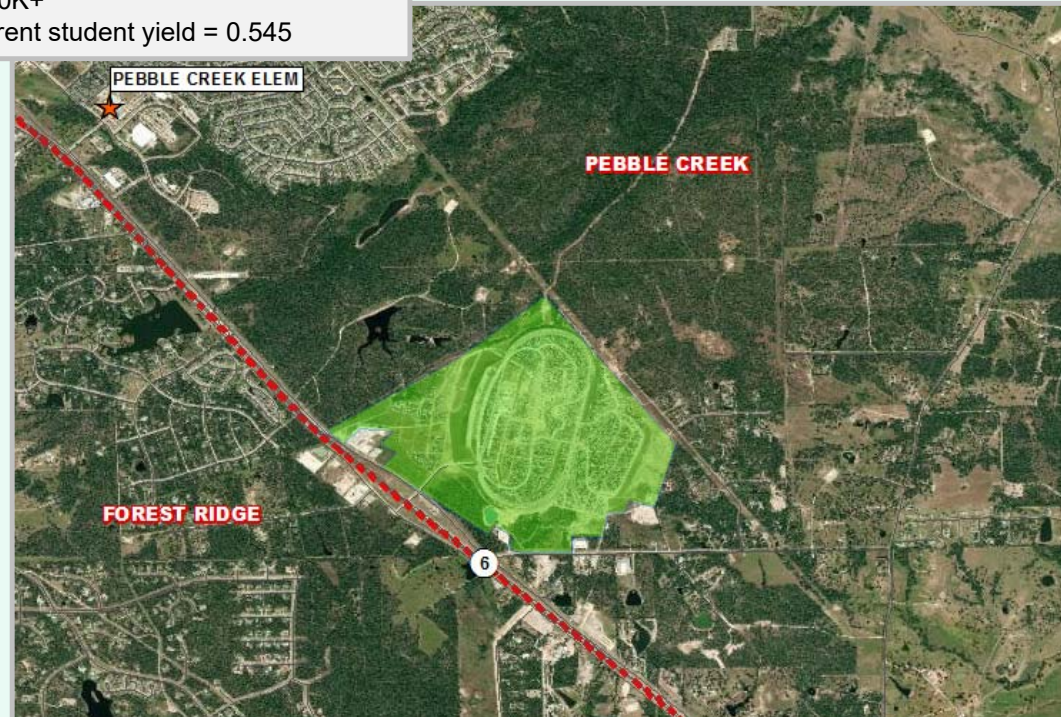
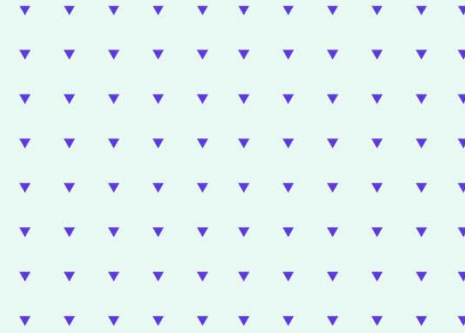
-  Future Development
-  Under Construction



# Residential Activity

## Southern Pointe

- 1,994 total SF lots
- Approx. 1,788 future lots
- Approx. 121 occupied homes
- Approx. 31 homes under construction
- Approx. 54 vacant domestic lots
- Groundwork for Phase 102 (56 lots) underway
- Final plat for Phase 103 & Phase 119 (84 lots) approved Aug 2021
- Built 68 homes in last 12 months
- \$270K+
- Current student yield = 0.545

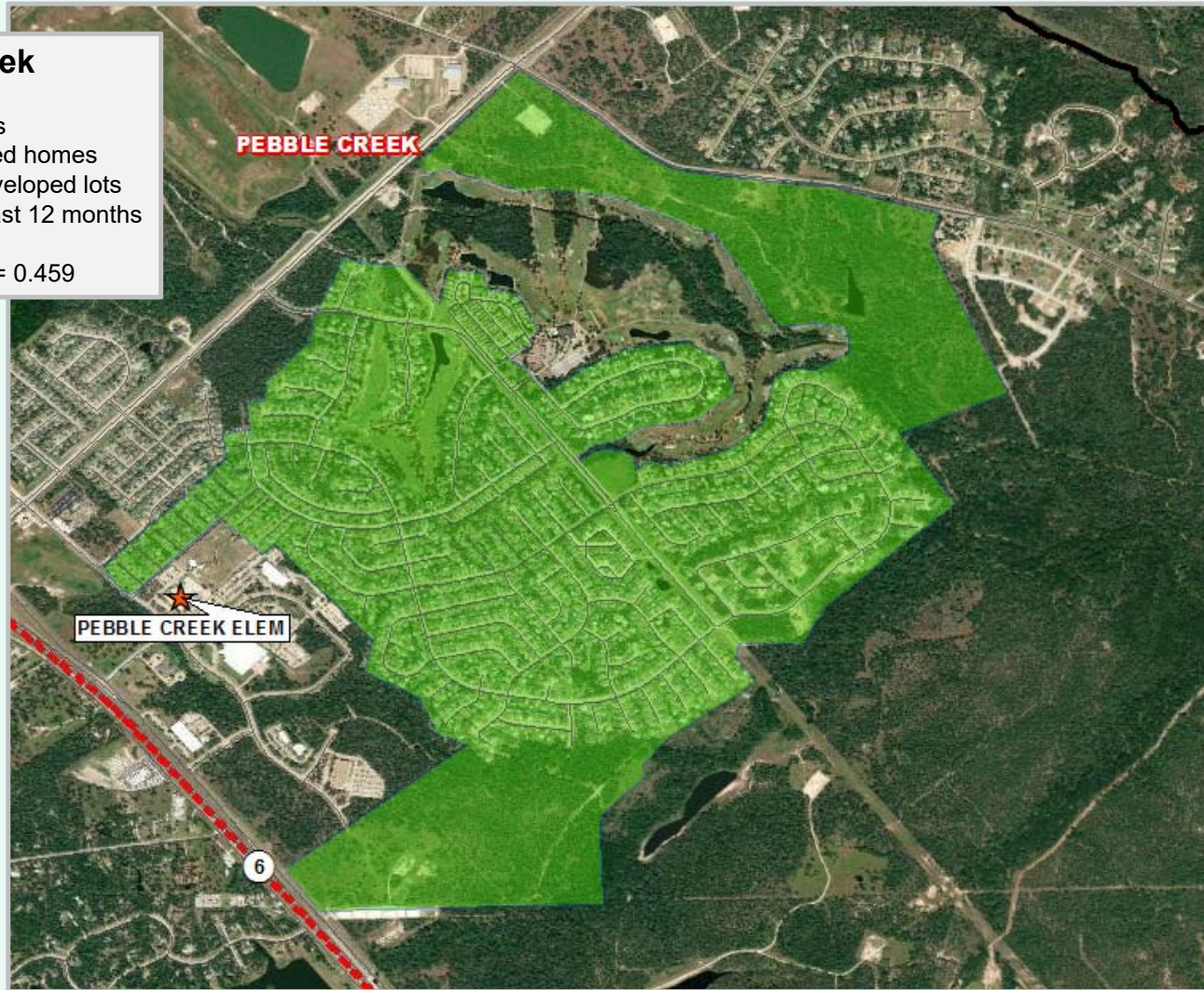




# Residential Activity

## Pebblecreek

- 1,800 total lots
- Approx. 337 future lots
- Approx. 1,390 occupied homes
- Approx. 73 vacant developed lots
- Closed 10 homes in last 12 months
- \$200K+
- Current student yield = 0.459

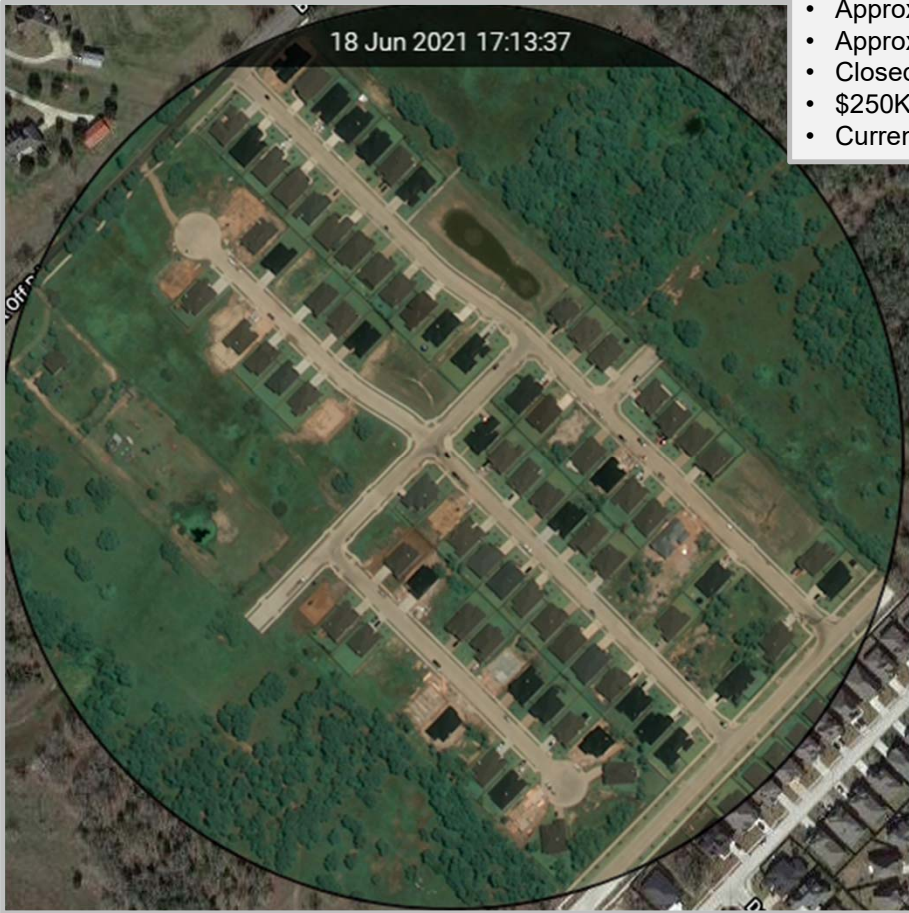
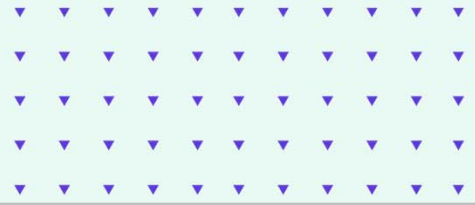




# Residential Activity

**Brewster Pointe**

- 160 total lots
- Approx. 38 future lots
- Approx. 76 occupied homes
- Approx. 10 homes under construction
- Approx. 36 vacant domestic lots
- Closed 23 homes in last 12 months
- \$250K+
- Current student yield = 0.474

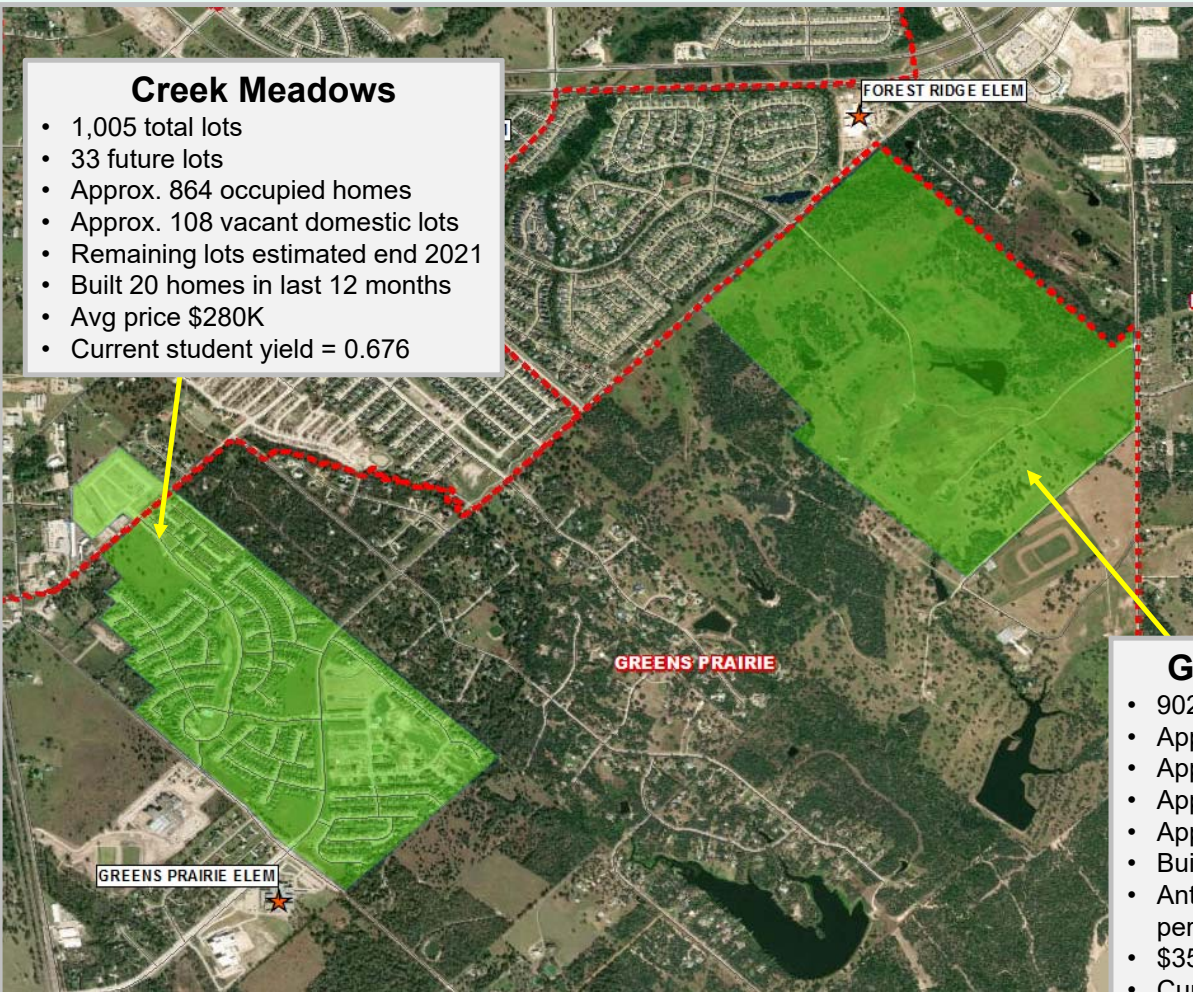




# Residential Activity

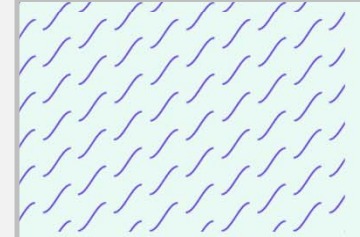
## Creek Meadows

- 1,005 total lots
- 33 future lots
- Approx. 864 occupied homes
- Approx. 108 vacant domestic lots
- Remaining lots estimated end 2021
- Built 20 homes in last 12 months
- Avg price \$280K
- Current student yield = 0.676



## Greens Prairie Reserve

- 902 total lots
- Approx. 806 future lots
- Approx. 22 occupied homes
- Approx. 10 homes under construction
- Approx. 64 vacant domestic lots
- Built 12 homes in last 12 months
- Anticipate building 40 – 60 homes per year
- \$350K+
- Current student yield = 0.5





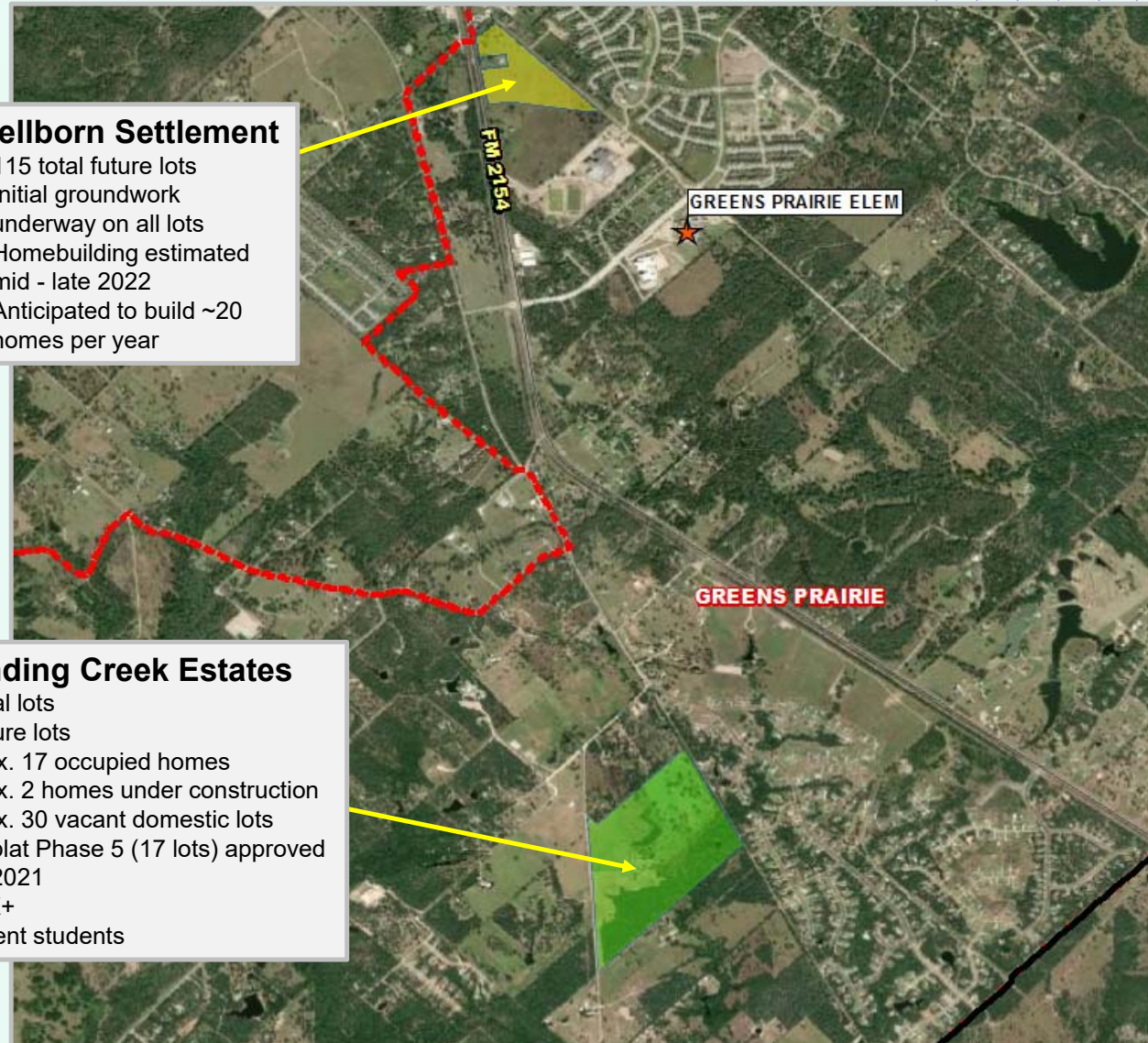
## Residential Activity

### Wellborn Settlement

- 115 total future lots
- Initial groundwork underway on all lots
- Homebuilding estimated mid - late 2022
- Anticipated to build ~20 homes per year

### Winding Creek Estates

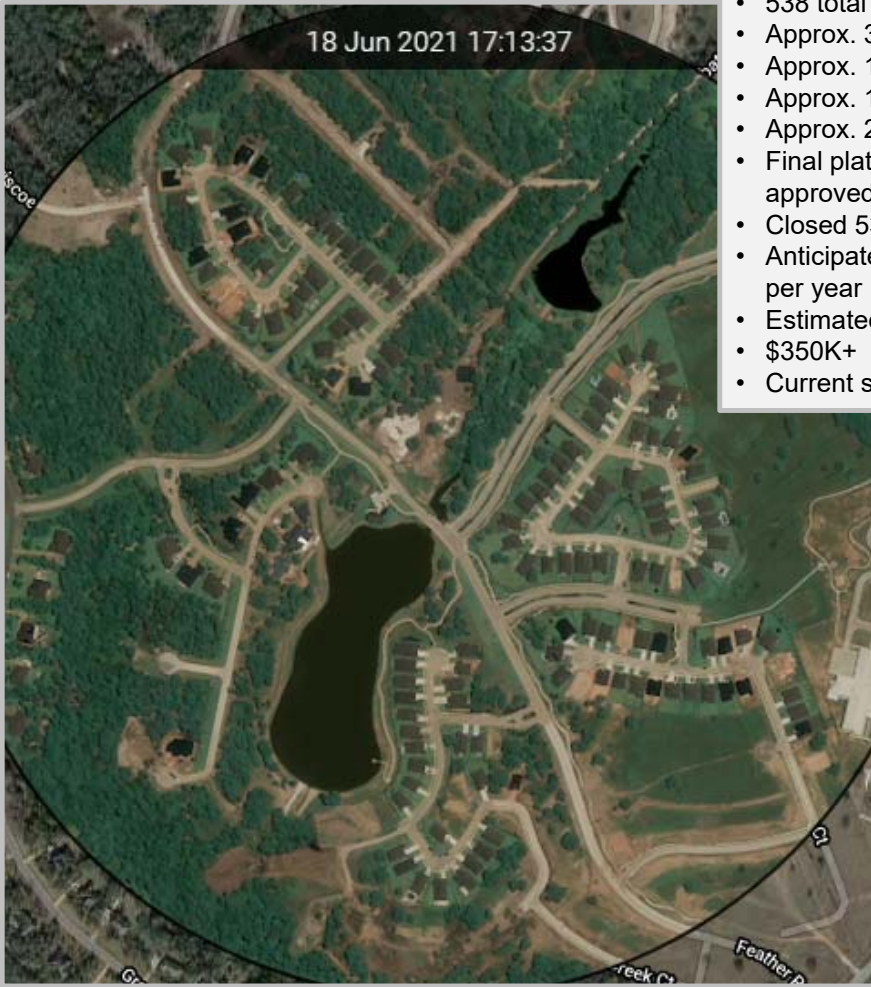
- 87 total lots
- 38 future lots
- Approx. 17 occupied homes
- Approx. 2 homes under construction
- Approx. 30 vacant domestic lots
- Final plat Phase 5 (17 lots) approved June 2021
- \$530K+
- 2 current students





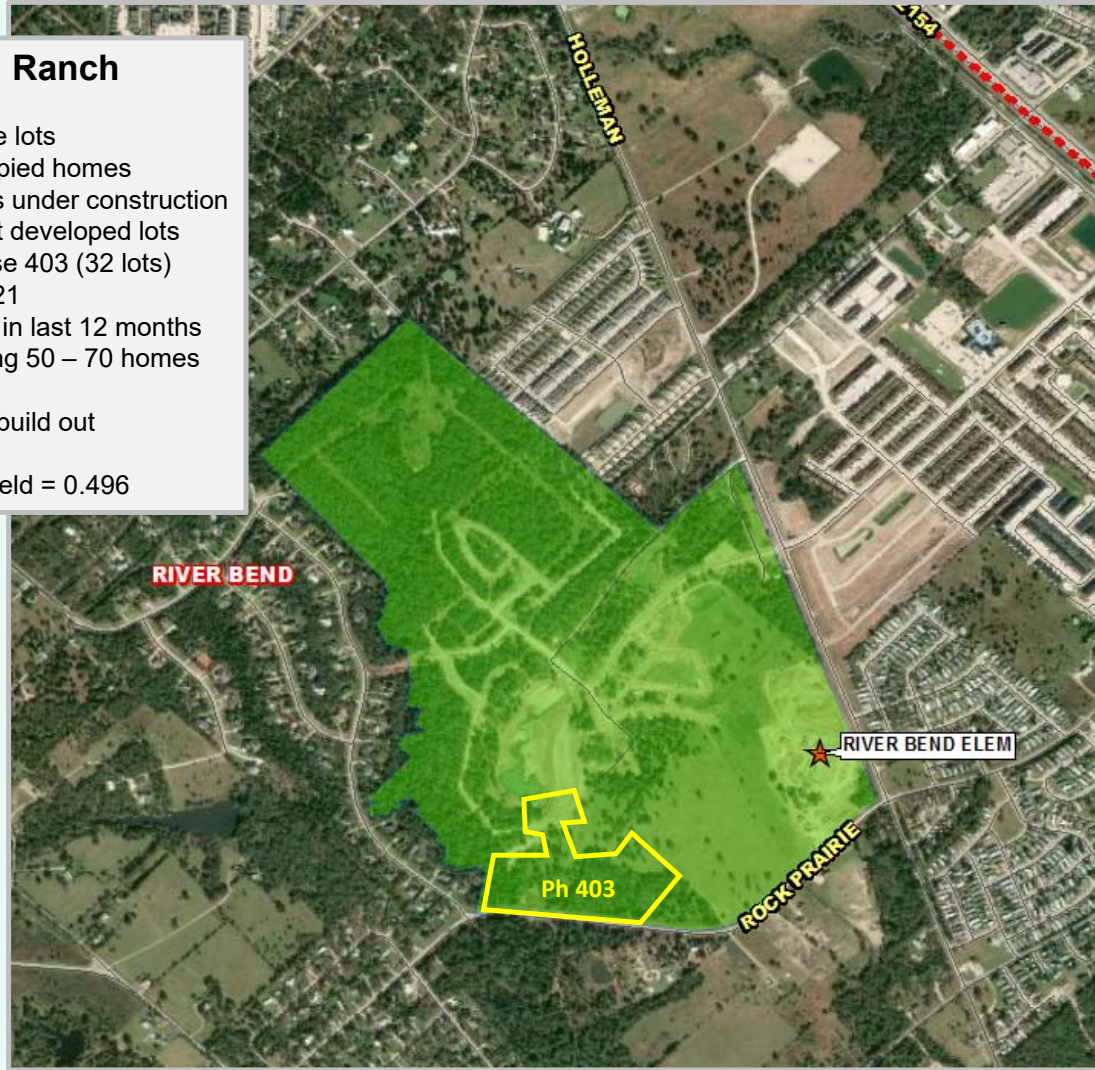
# Residential Activity

18 Jun 2021 17:13:37



## Mission Ranch

- 538 total lots
- Approx. 375 future lots
- Approx. 125 occupied homes
- Approx. 12 homes under construction
- Approx. 26 vacant developed lots
- Final plat for Phase 403 (32 lots) approved Aug 2021
- Closed 53 homes in last 12 months
- Anticipated building 50 – 70 homes per year
- Estimated 5 year build out
- \$350K+
- Current student yield = 0.496

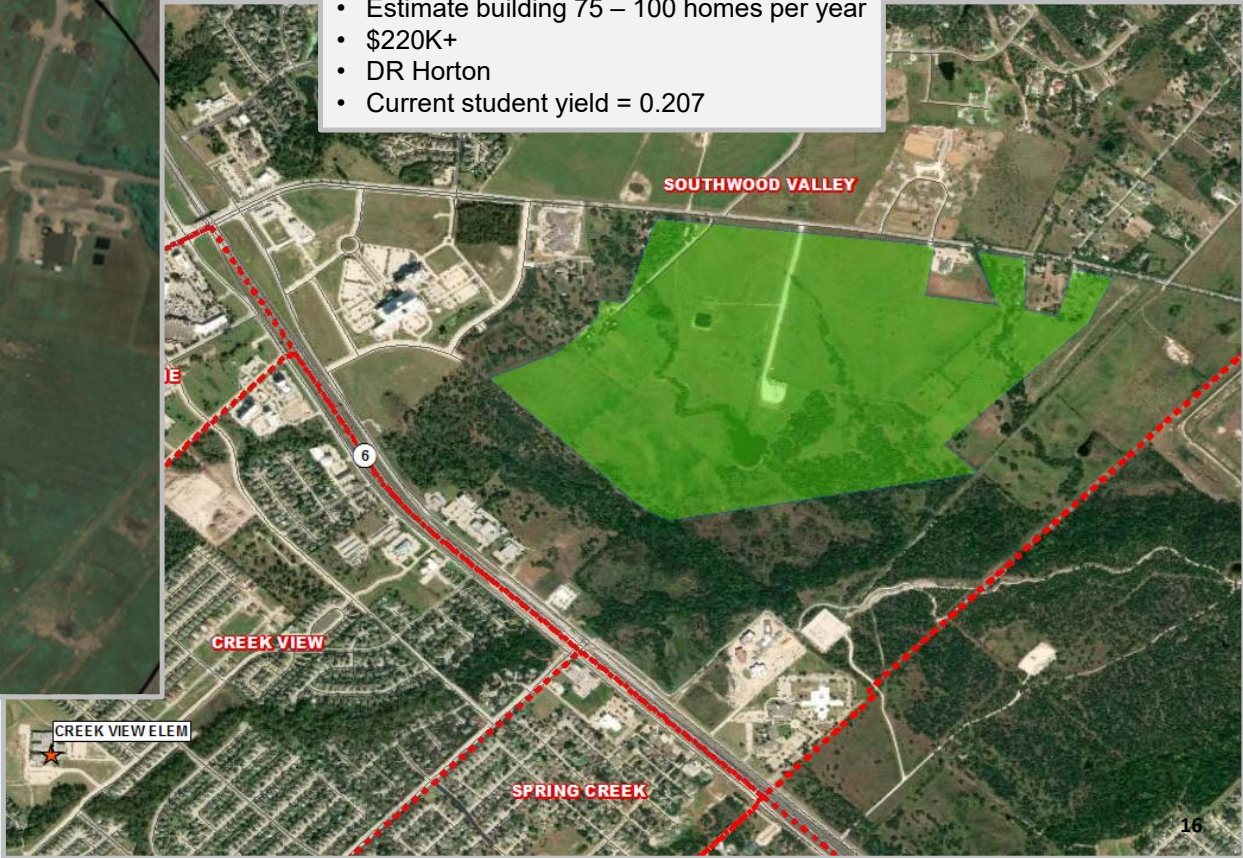




# Residential Activity

### Midtown Reserve

- 724 total lots
- 421 future lots
- Approx. 92 occupied homes
- Approx. 24 homes under construction
- Approx. 187 vacant developed lots
- Revised prelim plat approved Aug 2021
- Built 68 homes in last 12 months
- Estimate building 75 – 100 homes per year
- \$220K+
- DR Horton
- Current student yield = 0.207

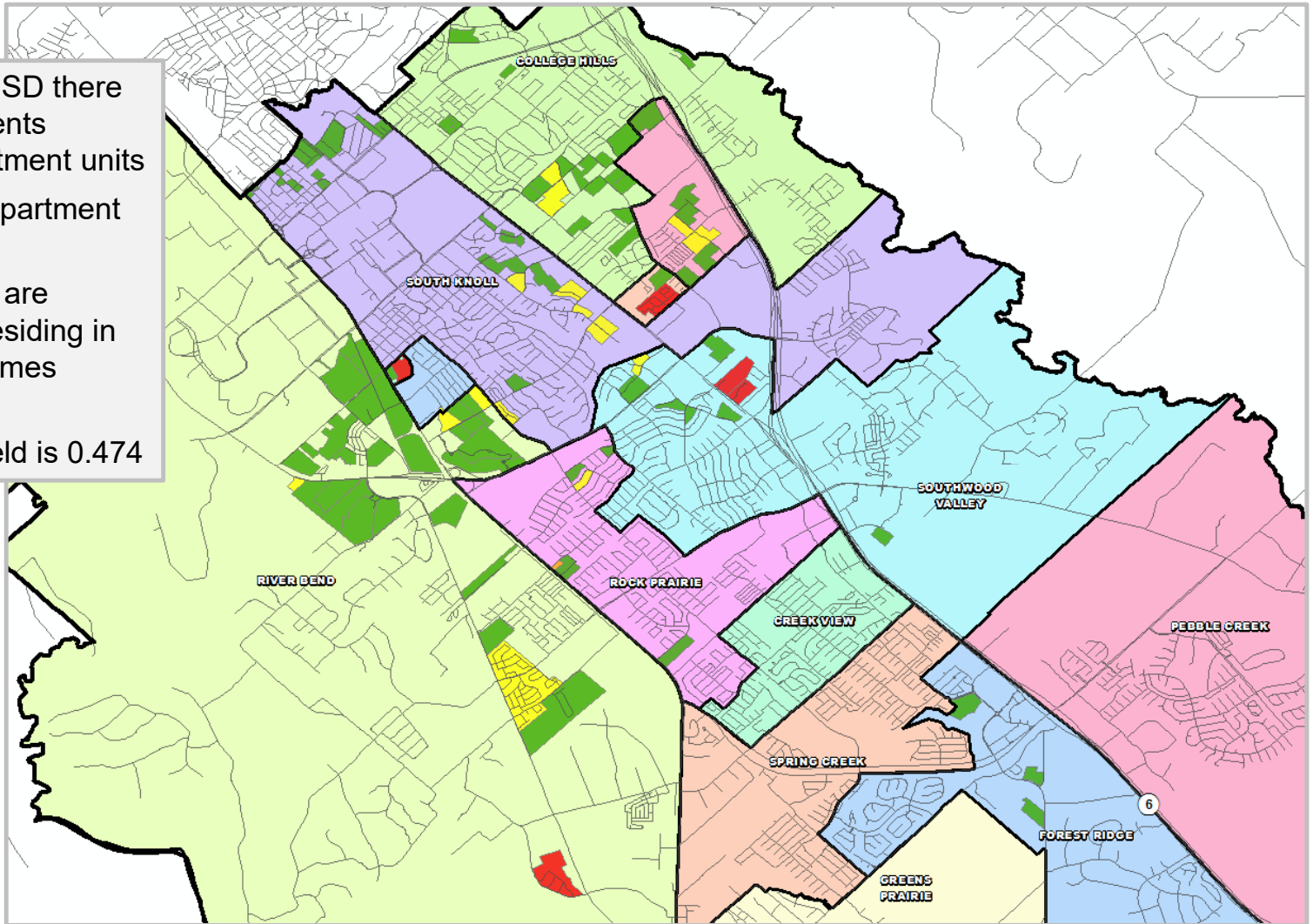
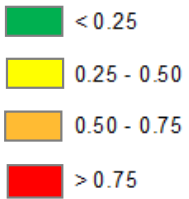




# Multi Family Yield Analysis

- Within College Station ISD there are roughly 2,078 students residing in 20,476 apartment units
- The district's average apartment yield is 0.101
- Within the district there are roughly 496 students residing in 1,046 manufactured homes
- The district's average manufactured home yield is 0.474

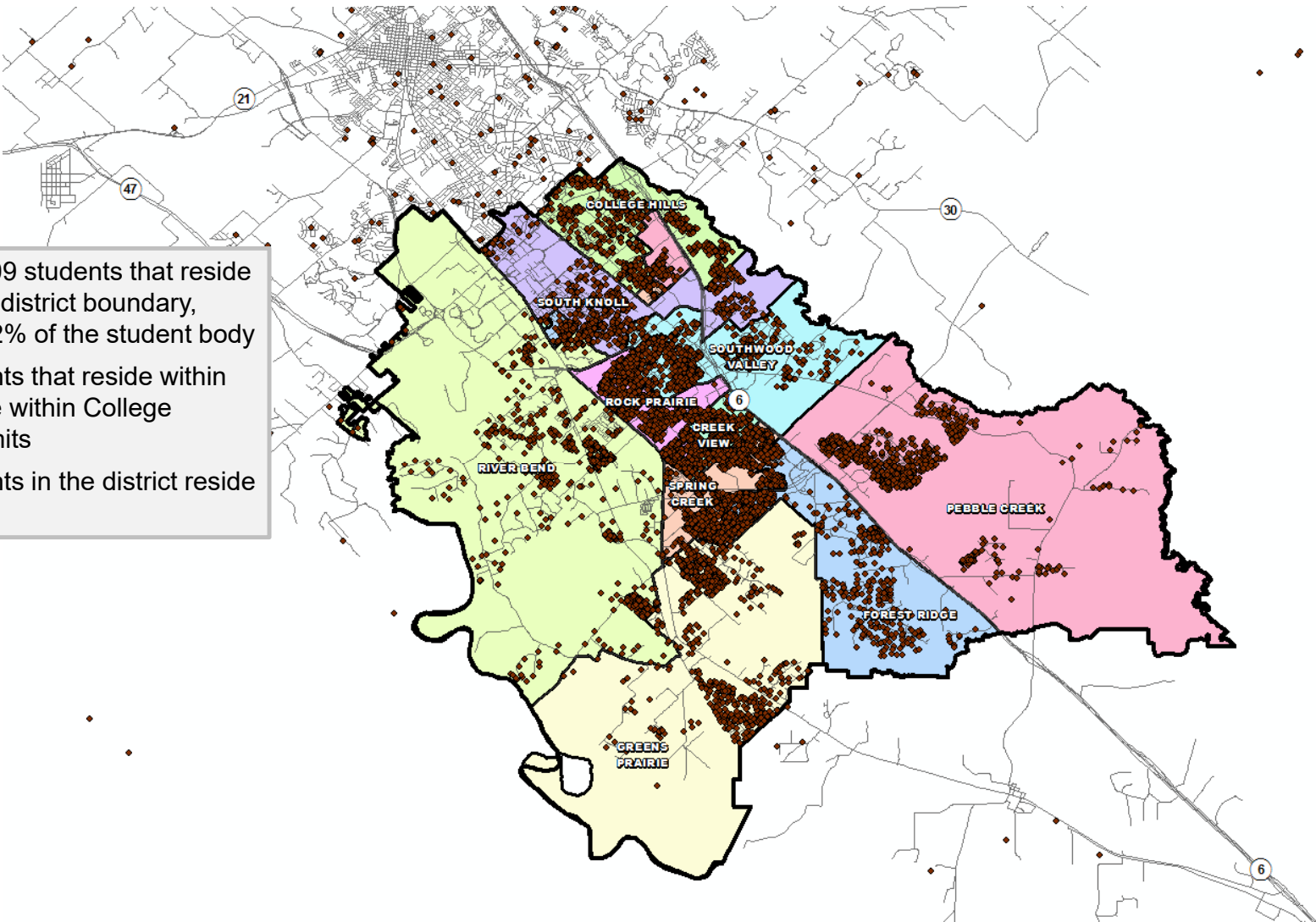
### Multi-Family Yield





# Student Density Map

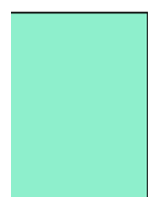
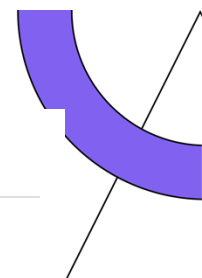
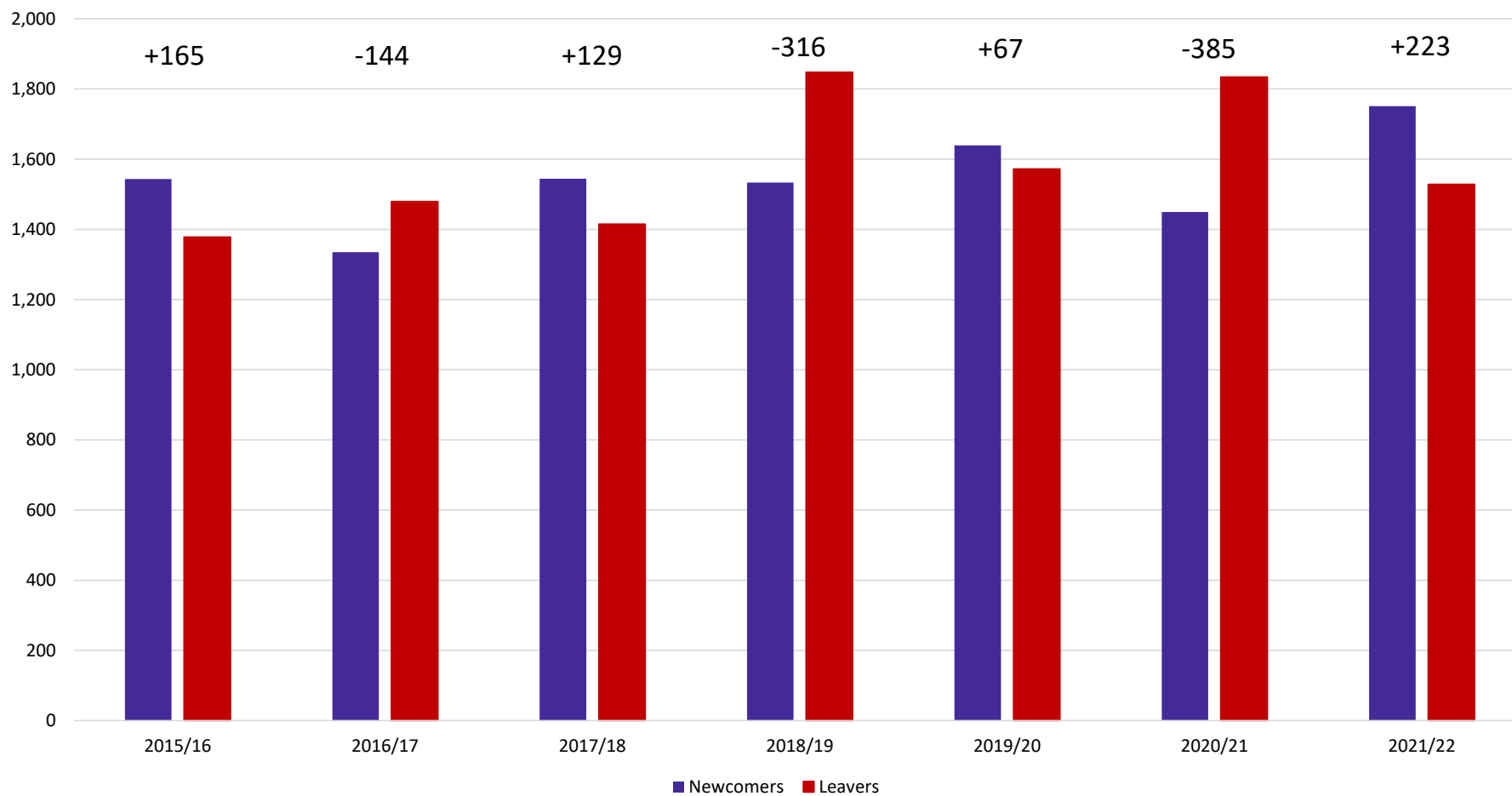
- CSISD has 309 students that reside outside of the district boundary, representing 2% of the student body
- 77% of students that reside within the district live within College Station city limits
- 86% of students in the district reside west of Hwy 6





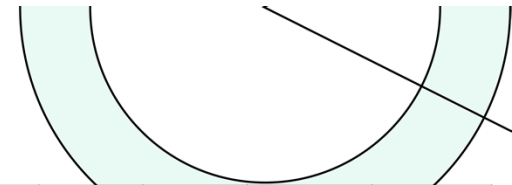
# Newcomer and Leaver Analysis

CSISD Newcomers and Leavers





# Ten Year Forecast by Grade Level



| Year    | EE  | PK  | K     | 1st   | 2nd   | 3rd   | 4th   | 5th   | 6th   | 7th   | 8th   | 9th   | 10th  | 11th  | 12th  | Total  | Total Growth | Total % |
|---------|-----|-----|-------|-------|-------|-------|-------|-------|-------|-------|-------|-------|-------|-------|-------|--------|--------------|---------|
| 2017/18 | 87  | 328 | 1,067 | 1,044 | 1,050 | 1,078 | 1,106 | 1,054 | 967   | 1,010 | 968   | 1,021 | 943   | 917   | 930   | 13,570 |              |         |
| 2018/19 | 141 | 355 | 963   | 1,019 | 977   | 1,036 | 1,073 | 1,081 | 1,048 | 982   | 998   | 1,059 | 991   | 910   | 907   | 13,540 | -30          | -0.2%   |
| 2019/20 | 142 | 425 | 1,032 | 1,015 | 1,019 | 1,011 | 1,024 | 1,091 | 1,104 | 1,079 | 994   | 1,103 | 1,014 | 982   | 901   | 13,936 | 396          | 2.9%    |
| 2020/21 | 95  | 384 | 986   | 1,025 | 942   | 980   | 998   | 1,005 | 1,053 | 1,089 | 1,064 | 1,066 | 1,053 | 958   | 966   | 13,664 | -272         | -2.0%   |
| 2021/22 | 77  | 449 | 1,052 | 1,050 | 1,062 | 962   | 1,008 | 1,029 | 1,040 | 1,104 | 1,111 | 1,205 | 1,049 | 1,018 | 993   | 14,209 | 545          | 4.0%    |
| 2022/23 | 84  | 455 | 1,076 | 1,107 | 1,076 | 1,102 | 984   | 1,033 | 1,055 | 1,073 | 1,124 | 1,212 | 1,174 | 1,031 | 1,008 | 14,593 | 384          | 2.7%    |
| 2023/24 | 84  | 455 | 1,102 | 1,122 | 1,114 | 1,096 | 1,125 | 1,015 | 1,053 | 1,098 | 1,092 | 1,235 | 1,181 | 1,152 | 1,022 | 14,946 | 353          | 2.4%    |
| 2024/25 | 84  | 455 | 1,121 | 1,176 | 1,138 | 1,145 | 1,110 | 1,130 | 1,033 | 1,100 | 1,119 | 1,201 | 1,204 | 1,157 | 1,138 | 15,310 | 363          | 2.4%    |
| 2025/26 | 84  | 455 | 1,156 | 1,186 | 1,186 | 1,162 | 1,161 | 1,117 | 1,150 | 1,077 | 1,119 | 1,227 | 1,171 | 1,180 | 1,147 | 15,579 | 269          | 1.8%    |
| 2026/27 | 84  | 455 | 1,150 | 1,219 | 1,198 | 1,214 | 1,183 | 1,170 | 1,140 | 1,188 | 1,097 | 1,230 | 1,195 | 1,148 | 1,168 | 15,837 | 259          | 1.7%    |
| 2027/28 | 84  | 455 | 1,151 | 1,206 | 1,232 | 1,231 | 1,237 | 1,191 | 1,188 | 1,179 | 1,210 | 1,204 | 1,199 | 1,171 | 1,136 | 16,073 | 235          | 1.5%    |
| 2028/29 | 84  | 455 | 1,165 | 1,212 | 1,221 | 1,264 | 1,254 | 1,248 | 1,220 | 1,228 | 1,200 | 1,327 | 1,175 | 1,177 | 1,159 | 16,389 | 316          | 2.0%    |
| 2029/30 | 84  | 455 | 1,181 | 1,227 | 1,229 | 1,254 | 1,287 | 1,265 | 1,273 | 1,262 | 1,250 | 1,317 | 1,293 | 1,153 | 1,165 | 16,695 | 306          | 1.9%    |
| 2030/31 | 84  | 455 | 1,202 | 1,240 | 1,245 | 1,263 | 1,278 | 1,299 | 1,290 | 1,311 | 1,284 | 1,372 | 1,283 | 1,267 | 1,141 | 17,013 | 319          | 1.9%    |
| 2031/32 | 84  | 455 | 1,219 | 1,262 | 1,260 | 1,280 | 1,288 | 1,291 | 1,325 | 1,328 | 1,334 | 1,363 | 1,337 | 1,258 | 1,253 | 17,336 | 323          | 1.9%    |

Yellow box = largest grade per year  
Green box = second largest grade per year



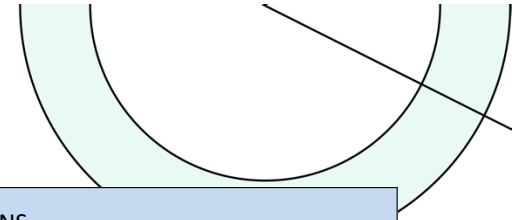
# Ten Year Forecast by Primary Campus

| Campus                           | Capacity     | 110%     | Fall         | ENROLLMENT PROJECTIONS |              |              |              |              |              |              |              |              |              |              |
|----------------------------------|--------------|----------|--------------|------------------------|--------------|--------------|--------------|--------------|--------------|--------------|--------------|--------------|--------------|--------------|
|                                  |              | Capacity | 2020/21      | 2021/22                | 2022/23      | 2023/24      | 2024/25      | 2025/26      | 2026/27      | 2027/28      | 2028/29      | 2029/30      | 2030/31      | 2031/32      |
| College Hills Elementary         | 660          | 726      | 645          | 575                    | 609          | 623          | 613          | 588          | 587          | 585          | 581          | 576          | 574          | 573          |
| Creek View Elementary            | 640          | 704      | 437          | 473                    | 484          | 492          | 485          | 499          | 509          | 513          | 512          | 504          | 497          | 492          |
| Forest Ridge Elementary          | 640          | 704      | 517          | 539                    | 537          | 541          | 562          | 567          | 572          | 569          | 561          | 557          | 554          | 557          |
| Greens Prairie Elementary        | 660          | 726      | 512          | 542                    | 570          | 590          | 622          | 662          | 693          | 721          | 746          | 771          | 790          | 812          |
| Pebble Creek Elementary          | 620          | 682      | 473          | 527                    | 581          | 640          | 670          | 736          | 786          | 846          | 902          | 967          | 1,026        | 1,089        |
| River Bend Elementary            | 660          | 726      | 467          | 525                    | 544          | 569          | 581          | 588          | 595          | 603          | 603          | 601          | 599          | 598          |
| Rock Prairie Elementary          | 620          | 682      | 580          | 622                    | 638          | 631          | 632          | 637          | 644          | 646          | 642          | 636          | 637          | 640          |
| South Knoll Elementary           | 660          | 726      | 583          | 610                    | 623          | 641          | 653          | 672          | 673          | 674          | 665          | 662          | 655          | 649          |
| Southwood Valley Elementary      | 660          | 726      | 595          | 621                    | 653          | 692          | 715          | 726          | 737          | 740          | 744          | 748          | 748          | 752          |
| Spring Creek Elementary          | 660          | 726      | 601          | 626                    | 645          | 679          | 696          | 715          | 707          | 699          | 699          | 695          | 687          | 686          |
| <b>ELEMENTARY TOTAL</b>          | <b>6480</b>  |          | <b>5,410</b> | <b>5,660</b>           | <b>5,884</b> | <b>6,098</b> | <b>6,229</b> | <b>6,390</b> | <b>6,503</b> | <b>6,596</b> | <b>6,655</b> | <b>6,717</b> | <b>6,767</b> | <b>6,848</b> |
| Elementary Absolute Growth       |              |          | -258         | 250                    | 224          | 214          | 131          | 161          | 113          | 93           | 59           | 62           | 50           | 81           |
| Elementary Percent Growth        |              |          | -4.55%       | 4.62%                  | 3.96%        | 3.64%        | 2.15%        | 2.58%        | 1.77%        | 1.43%        | 0.89%        | 0.93%        | 0.74%        | 1.20%        |
| Cypress Grove Intermediate       | 920          | 1,012    | 580          | 541                    | 546          | 555          | 596          | 634          | 634          | 644          | 654          | 665          | 677          | 673          |
| Oakwood Intermediate             | 920          | 1,012    | 714          | 720                    | 702          | 649          | 714          | 756          | 754          | 786          | 823          | 859          | 882          | 903          |
| Pecan Trail Intermediate         | 925          | 1,018    | 764          | 808                    | 840          | 864          | 852          | 877          | 921          | 948          | 991          | 1,014        | 1,030        | 1,039        |
| <b>INTERMEDIATE SCHOOL TOTAL</b> | <b>2,765</b> |          | <b>2,058</b> | <b>2,069</b>           | <b>2,088</b> | <b>2,068</b> | <b>2,162</b> | <b>2,267</b> | <b>2,309</b> | <b>2,379</b> | <b>2,468</b> | <b>2,538</b> | <b>2,589</b> | <b>2,615</b> |
| Intermed. School Absolute Growth |              |          | -137         | 11                     | 19           | -19          | 94           | 105          | 42           | 70           | 89           | 70           | 51           | 27           |
| Intermed. School Percent Growth  |              |          | -6.24%       | 0.53%                  | 0.89%        | -0.91%       | 4.53%        | 4.86%        | 1.84%        | 3.01%        | 3.76%        | 2.84%        | 1.99%        | 1.02%        |

Yellow box = exceeds 110% capacity



# Ten Year Forecast by Secondary Campus



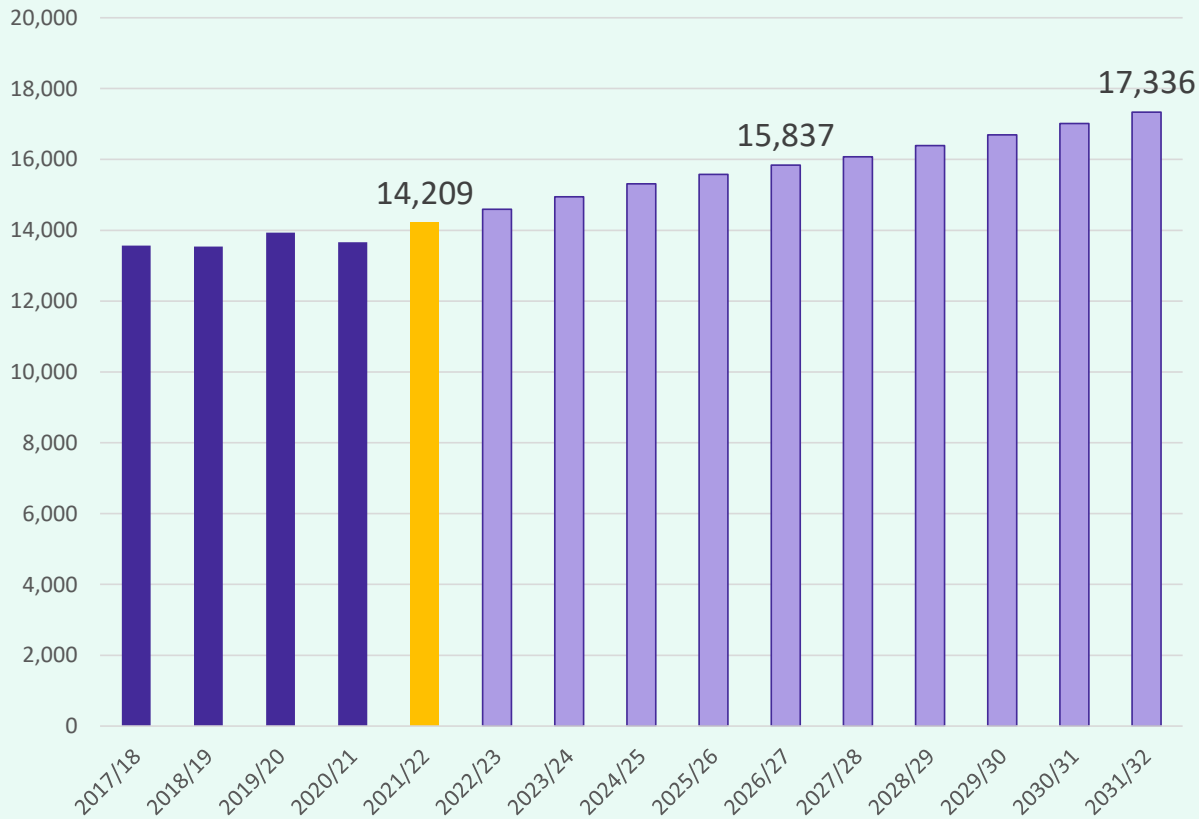
| Campus                         | Capacity     | 110%     | Fall          | ENROLLMENT PROJECTIONS |               |               |               |               |               |               |               |               |               |               |
|--------------------------------|--------------|----------|---------------|------------------------|---------------|---------------|---------------|---------------|---------------|---------------|---------------|---------------|---------------|---------------|
|                                |              | Capacity | 2020/21       | 2021/22                | 2022/23       | 2023/24       | 2024/25       | 2025/26       | 2026/27       | 2027/28       | 2028/29       | 2029/30       | 2030/31       | 2031/32       |
| A&M Consolidated Middle School | 920          | 1,012    | 689           | 710                    | 694           | 714           | 708           | 652           | 722           | 759           | 757           | 791           | 827           | 863           |
| College Station Middle School  | 940          | 1,034    | 666           | 660                    | 641           | 590           | 585           | 595           | 628           | 662           | 659           | 671           | 681           | 693           |
| Wellborn Middle School         | 925          | 1,018    | 798           | 843                    | 859           | 884           | 924           | 948           | 933           | 965           | 1,010         | 1,048         | 1,085         | 1,104         |
| <b>MIDDLE SCHOOL TOTAL</b>     | <b>2785</b>  |          | <b>2,153</b>  | <b>2,213</b>           | <b>2,194</b>  | <b>2,188</b>  | <b>2,217</b>  | <b>2,194</b>  | <b>2,283</b>  | <b>2,386</b>  | <b>2,426</b>  | <b>2,510</b>  | <b>2,593</b>  | <b>2,660</b>  |
| Middle School Absolute Growth  |              |          | 82            | 60                     | -19           | -6            | 28            | -22           | 88            | 104           | 40            | 84            | 83            | 67            |
| Middle School Percent Growth   |              |          | 3.96%         | 2.79%                  | -0.84%        | -0.28%        | 1.30%         | -1.00%        | 4.02%         | 4.54%         | 1.66%         | 3.46%         | 3.31%         | 2.59%         |
| A&M Consolidated High School   | 2,350        | 2,585    | 1,897         | 2,107                  | 2,224         | 2,310         | 2,366         | 2,401         | 2,398         | 2,373         | 2,447         | 2,481         | 2,559         | 2,615         |
| College Station High School    | 1,950        | 2,145    | 2,069         | 2,076                  | 2,116         | 2,193         | 2,247         | 2,237         | 2,256         | 2,250         | 2,304         | 2,360         | 2,417         | 2,509         |
| College View High School       |              |          | 76            | 82                     | 86            | 87            | 87            | 87            | 87            | 87            | 87            | 87            | 87            | 87            |
| College Station JJAEP          |              |          | 1             | 2                      | 2             | 2             | 2             | 2             | 2             | 2             | 2             | 2             | 0             | 0             |
| <b>HIGH SCHOOL TOTAL</b>       | <b>4,300</b> |          | <b>4,043</b>  | <b>4,267</b>           | <b>4,428</b>  | <b>4,592</b>  | <b>4,702</b>  | <b>4,727</b>  | <b>4,743</b>  | <b>4,712</b>  | <b>4,840</b>  | <b>4,930</b>  | <b>5,063</b>  | <b>5,211</b>  |
| High School Absolute Growth    |              |          | 41            | 224                    | 161           | 164           | 110           | 25            | 16            | -31           | 128           | 90            | 133           | 148           |
| High School Percent Growth     |              |          | 1.02%         | 5.54%                  | 3.76%         | 3.71%         | 2.40%         | 0.53%         | 0.34%         | -0.65%        | 2.72%         | 1.86%         | 2.70%         | 2.92%         |
| <b>DISTRICT TOTALS</b>         |              |          | <b>13,664</b> | <b>14,209</b>          | <b>14,593</b> | <b>14,946</b> | <b>15,310</b> | <b>15,579</b> | <b>15,837</b> | <b>16,073</b> | <b>16,389</b> | <b>16,695</b> | <b>17,011</b> | <b>17,334</b> |
| District Absolute Growth       |              |          | -272          | 545                    | 384           | 353           | 363           | 269           | 259           | 235           | 316           | 306           | 317           | 323           |
| District Percent Growth        |              |          | -1.95%        | 3.99%                  | 2.71%         | 2.42%         | 2.43%         | 1.76%         | 1.66%         | 1.49%         | 1.97%         | 1.87%         | 1.90%         | 1.90%         |

Yellow box = exceeds 110% capacity



## Key Takeaways

Enrollment Forecast



- College Station enrollment did bounce back this year
- New single family housing continues strong pace well over 400 annual starts
- District likely to see 400-500 new single family homes per year for the next 5-7 years
- New single family housing accelerating in Pebble Creek and Green Prairie elementary ones
- District enrollment likely to exceed 15,800 by 2026/2027 school year
- By 2031/32 district enrollment could exceed 17,300