



# **2026–27 Boundary Adjustments Update**

Heather Wilson, Chief Financial Officer  
Austin Dunson, Director of Communications

# Boundary Adjustment Timeline



**June 17, 2025:** Board Meeting – Boundary adjustment plans for the 2026–27 school year introduced

**June 23, 2025:** Community input open on CSISD website

**July 15, 2025:** Board Meeting – Boundary adjustment update, review community feedback

**Aug. 19, 2025:** Board Meeting – Boundary adjustment update, review community feedback

**Aug. 25, 2025:** Community input open on CSISD website

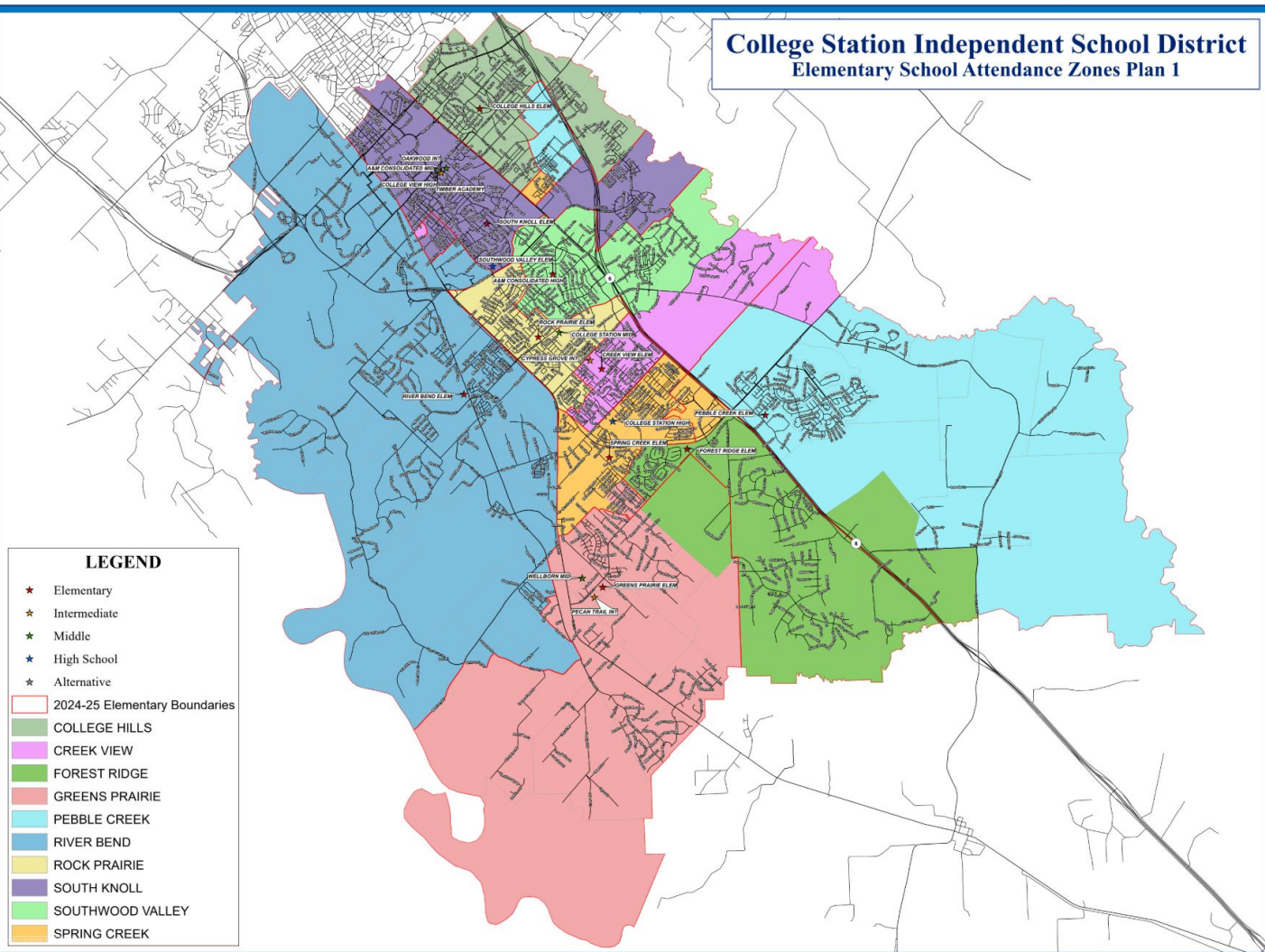
**Sept/Oct\*:** Additional updates/Public Forum

**Nov. 18, 2025\*:** Recommendation to the Board for boundary adjustments for the 2026–27 school year

**Aug. 2026:** Boundary adjustments in effect

*\*Dates subject to change based on adjustments and Board discussions*

# College Station Independent School District Elementary School Attendance Zones Plan 1

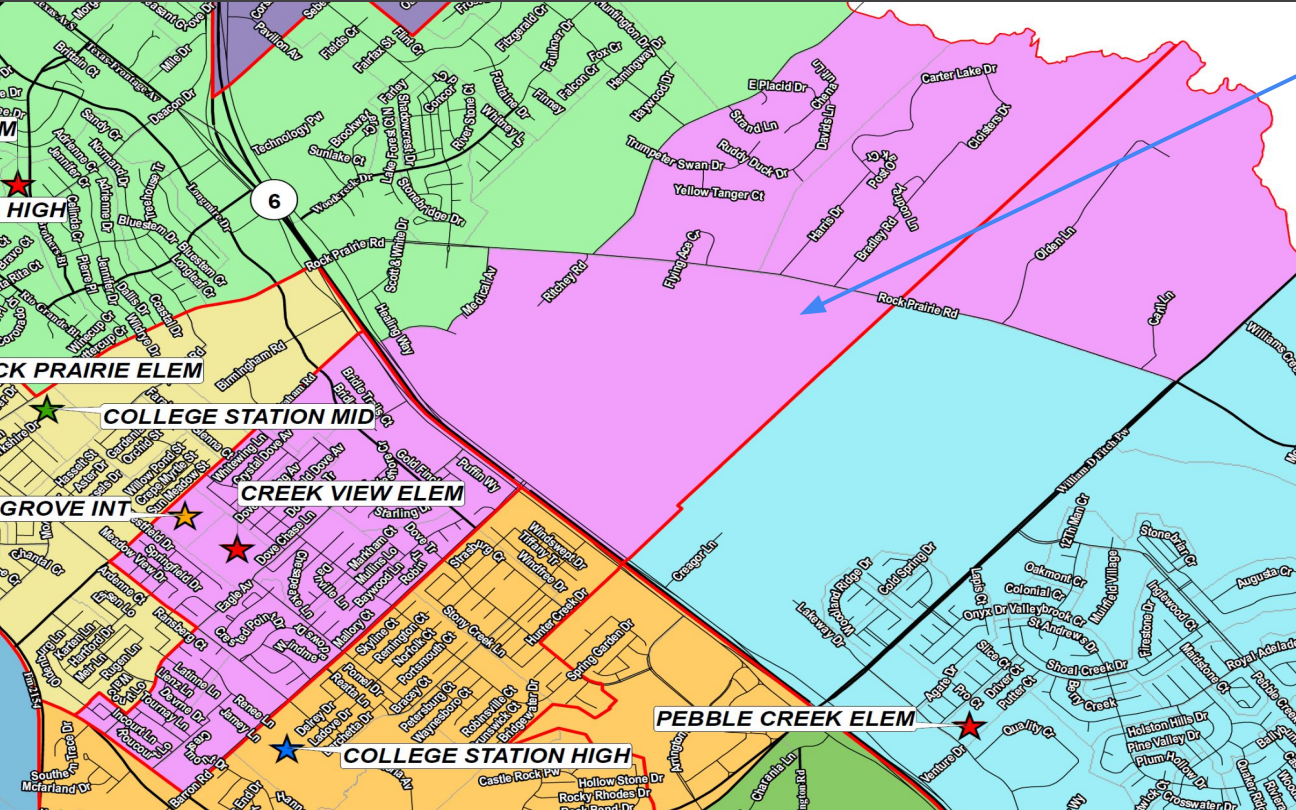


**LEGEND**

- ★ Elementary
- ★ Intermediate
- ★ Middle
- ★ High School
- ★ Alternative
- ▭ 2024-25 Elementary Boundaries
- ▭ COLLEGE HILLS
- ▭ CREEK VIEW
- ▭ FOREST RIDGE
- ▭ GREENS PRAIRIE
- ▭ PEBBLE CREEK
- ▭ RIVER BEND
- ▭ ROCK PRAIRIE
- ▭ SOUTH KNOLL
- ▭ SOUTHWOOD VALLEY
- ▭ SPRING CREEK



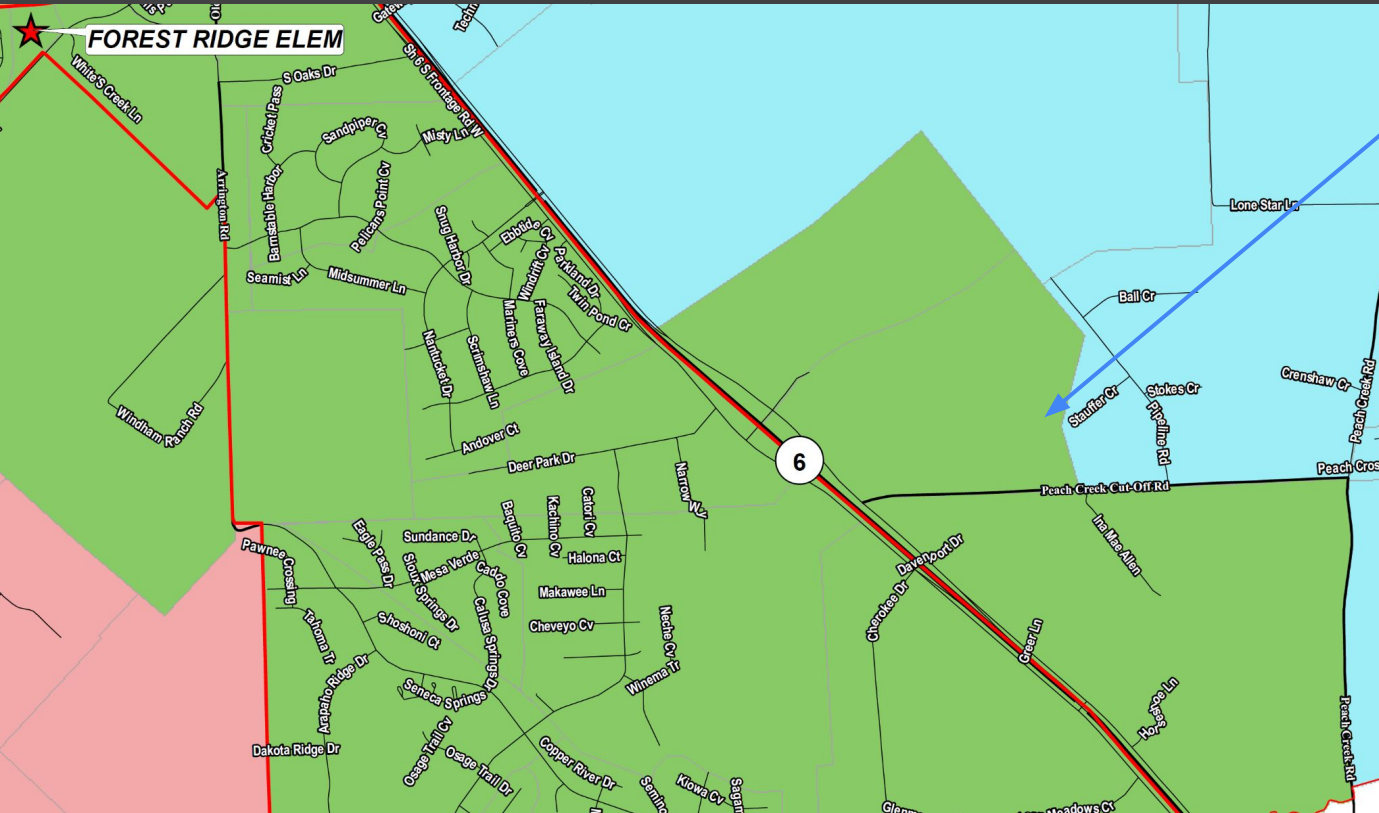
# Elementary Zone Plan I



## Creek View Elementary

- Extends across Hwy 6
- Midtown Reserve Area
- Area East of Rock Prairie Rd & North of William D. Fitch Parkway

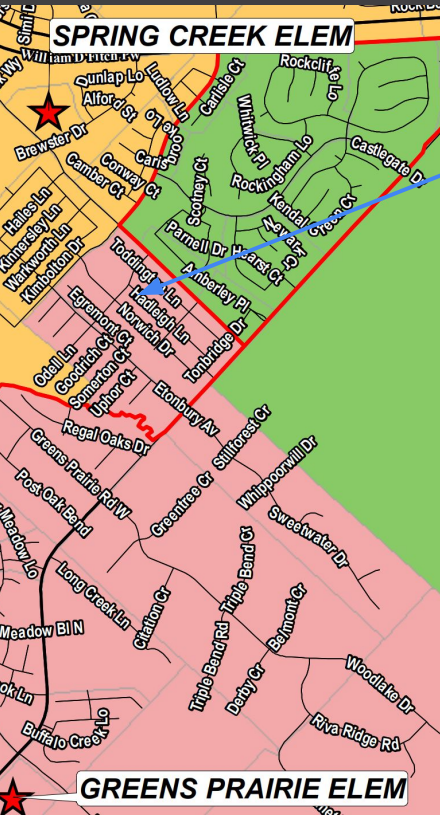
# Elementary Zone Plan I



## Forest Ridge Elementary

- New Southern Point Development
- Area South of Southern Point Development

# Elementary Zone Plan I

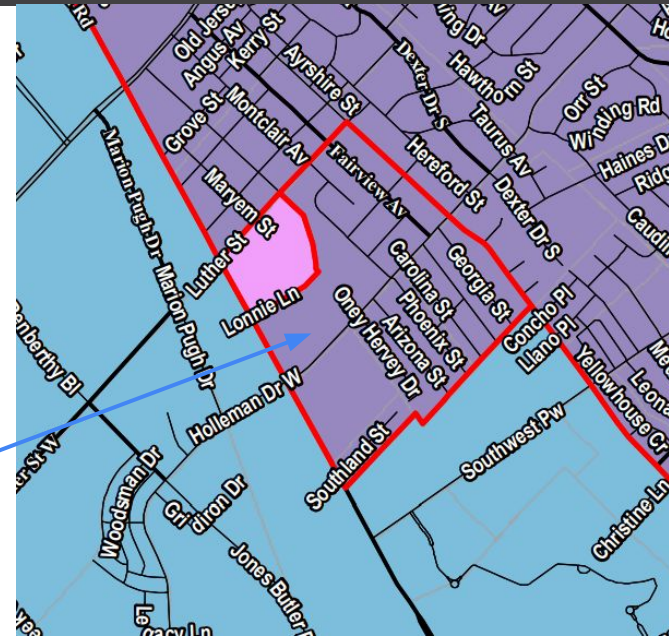


## Greens Prairie Elementary

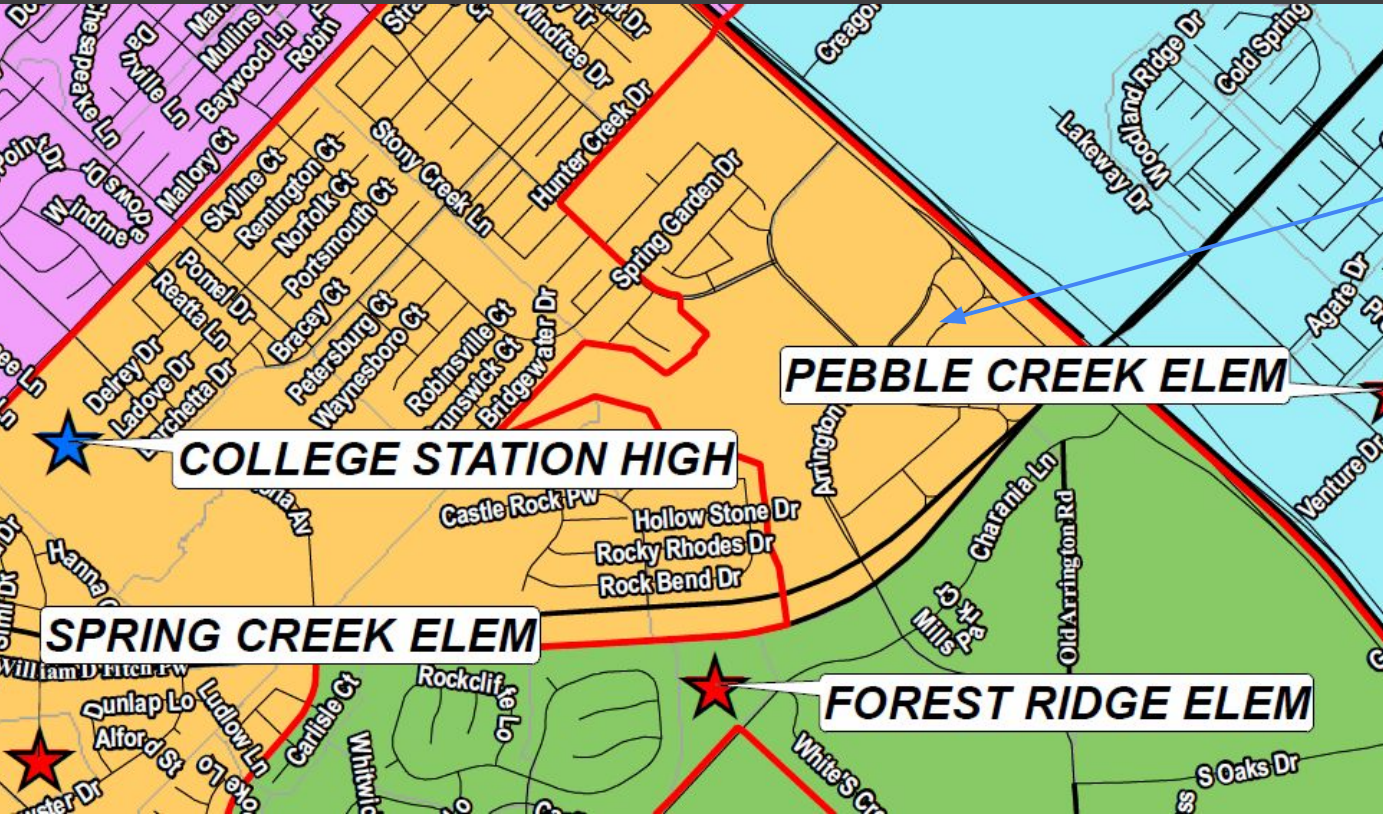
- Castlegate II Area

## South Knoll Elementary

- East of Wellborn Road (Oney Hervey to Georgia Street)



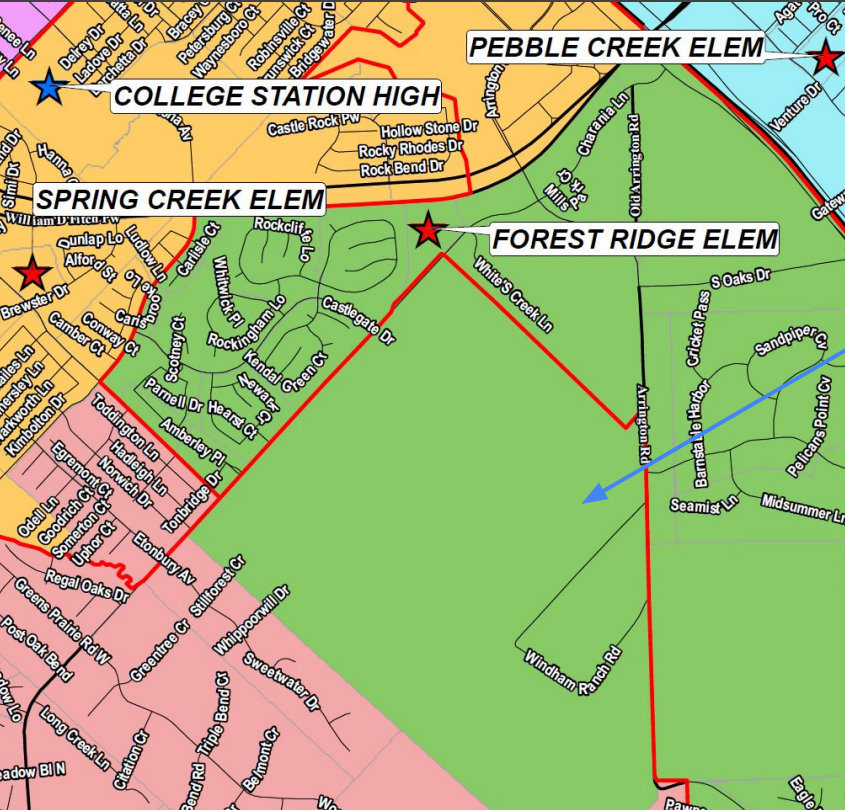
# Elementary Zone Plan I



## Spring Creek Elementary

- Spring Creek Townhomes Area

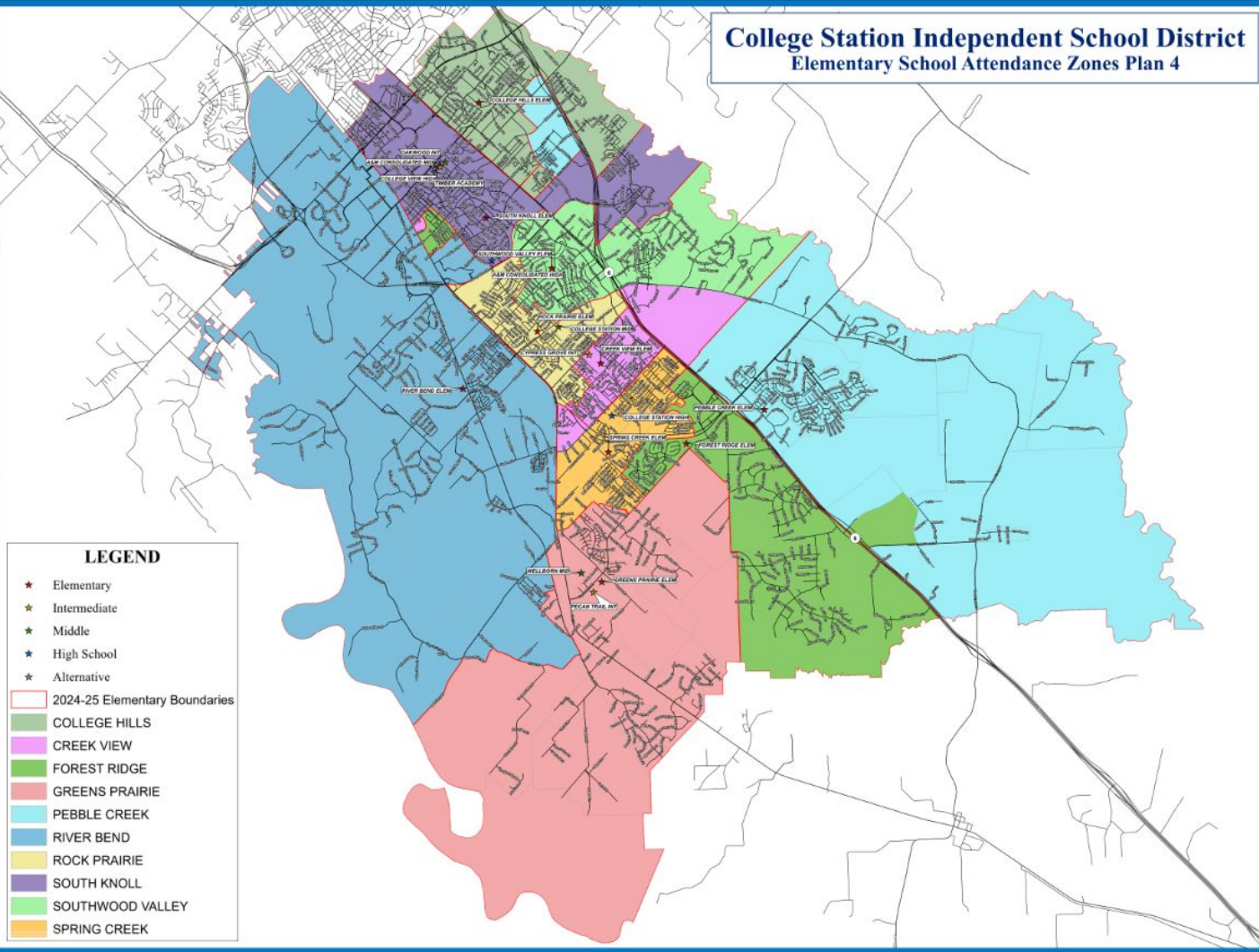
# Elementary Zone Plan I



## Forest Ridge Elementary

- Greens Prairie Reserve

# College Station Independent School District Elementary School Attendance Zones Plan 4

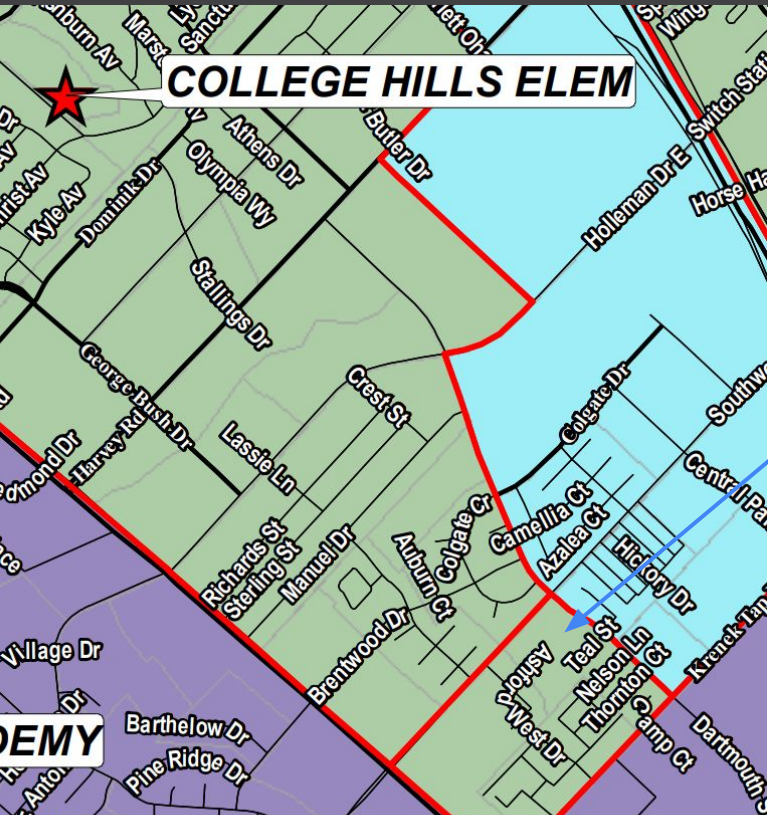


**LEGEND**

- ★ Elementary
- ★ Intermediate
- ★ Middle
- ★ High School
- ★ Alternative
- 2024-25 Elementary Boundaries
- COLLEGE HILLS
- CREEK VIEW
- FOREST RIDGE
- GREENS PRAIRIE
- PEBBLE CREEK
- RIVER BEND
- ROCK PRAIRIE
- SOUTH KNOLL
- SOUTHWOOD VALLEY
- SPRING CREEK



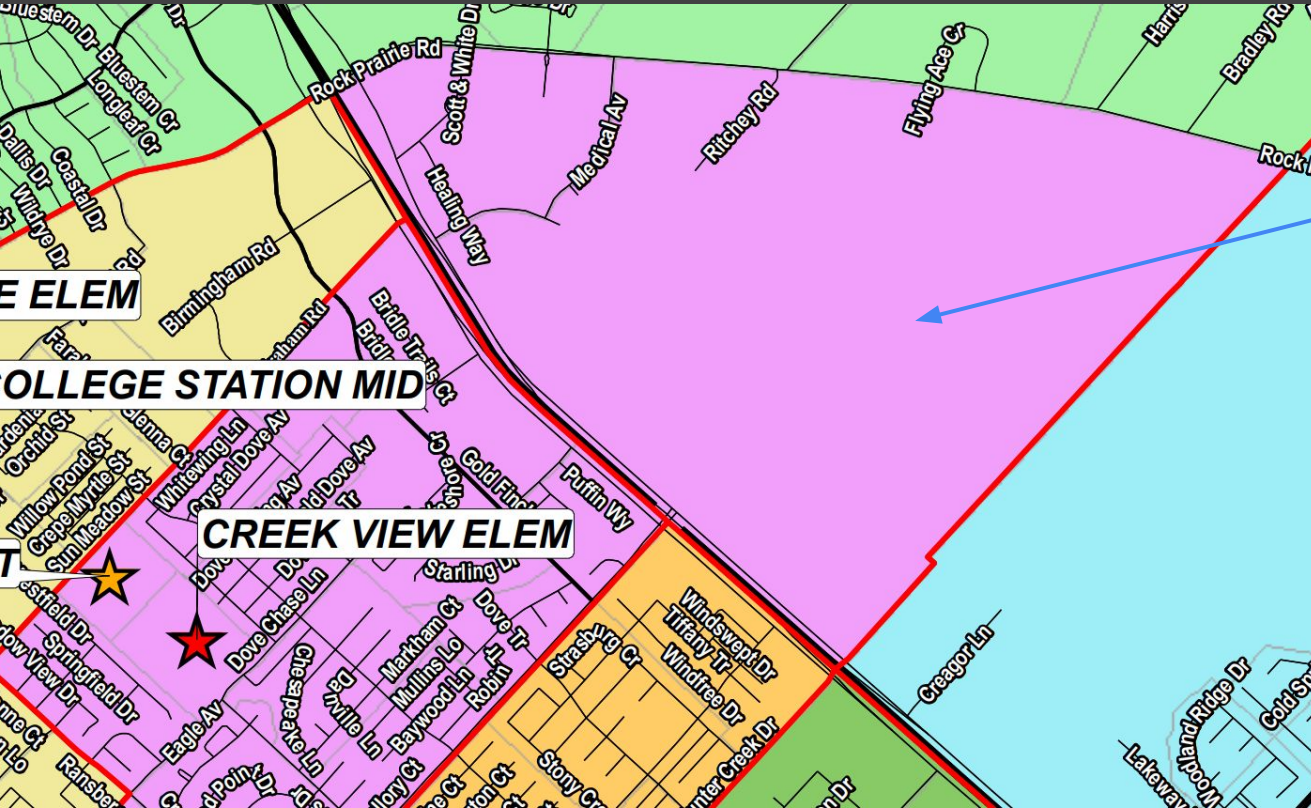
# Elementary Zone Plan 4



## College Hills Elementary

- Area between Krenek Tap Road and Southwest Parkway

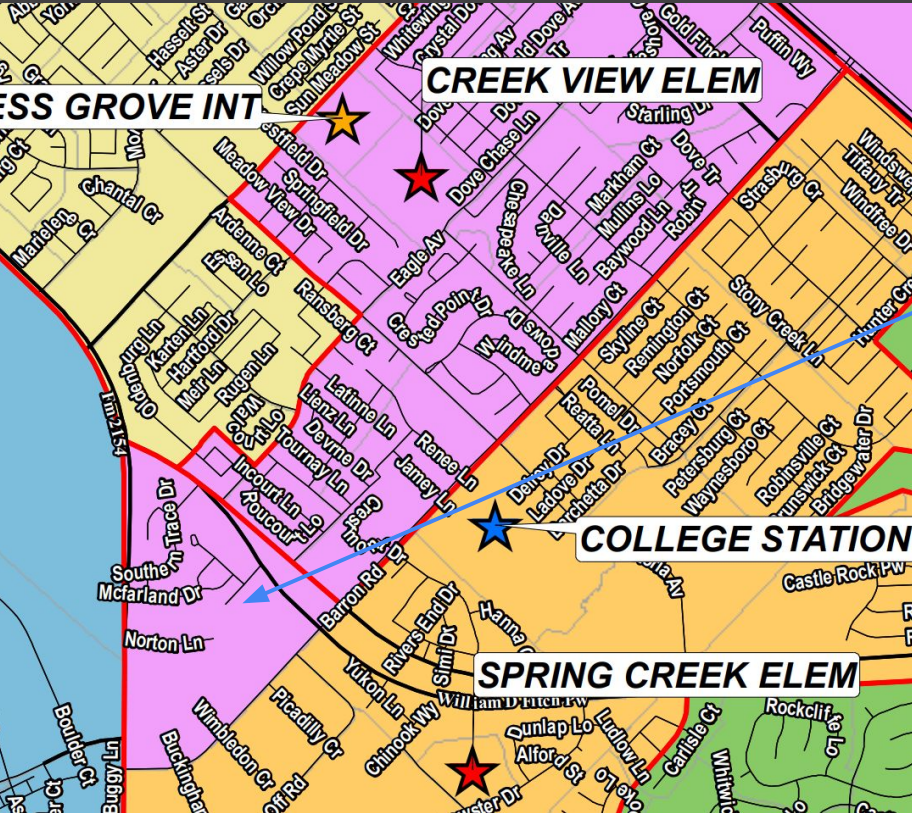
# Elementary Zone Plan 4



## Creek View Elementary

- Extends across Hwy 6 - Midtown Reserve Area

# Elementary Zone Plan 4



## Creek View Elementary

- Area between Wellborn Road and William D. Fitch Parkway, Southern Trace Drive Area

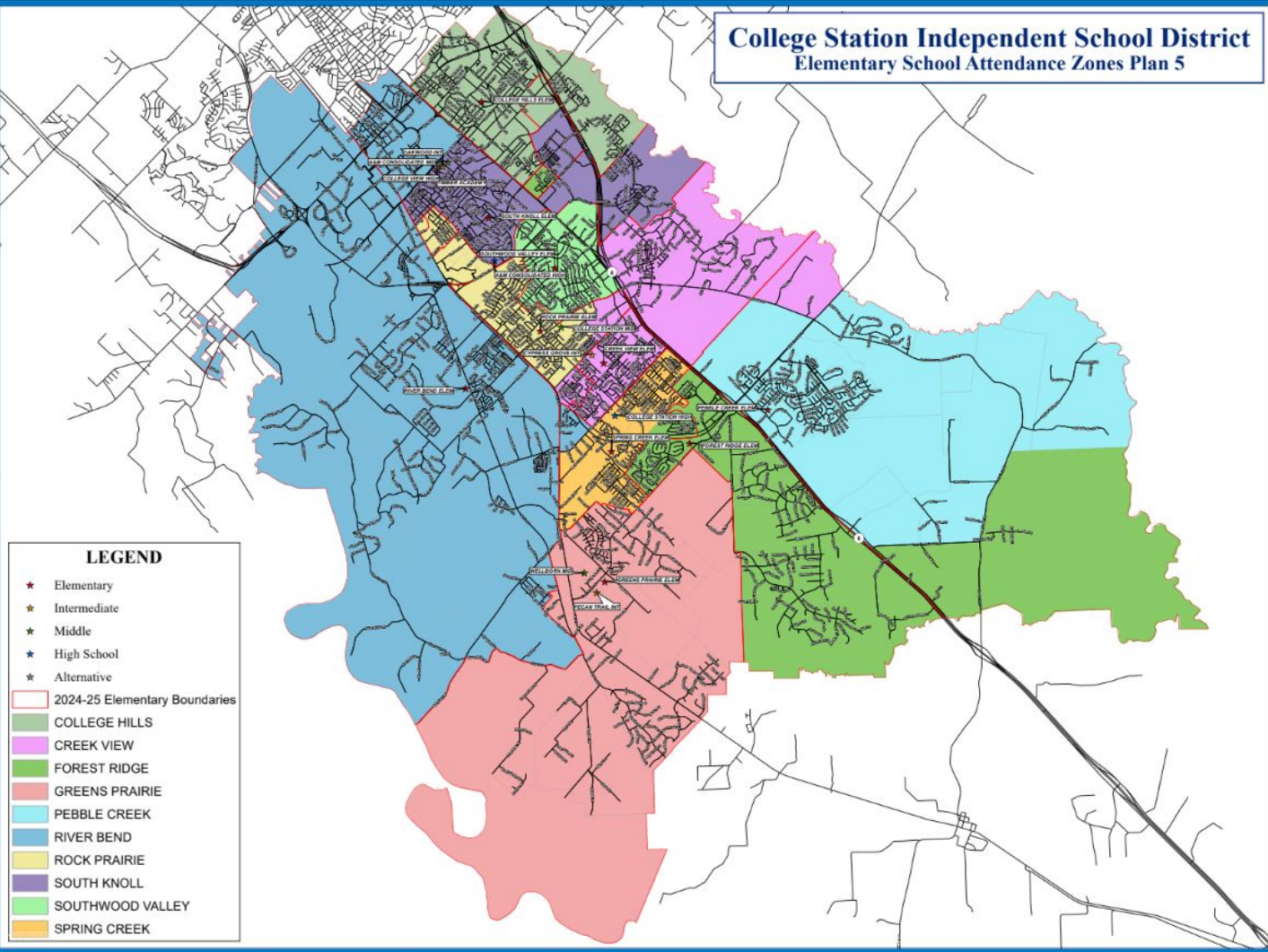
# Elementary Zone Plan 4



## Forest Ridge Elementary

- New Southern Point Addition

# College Station Independent School District Elementary School Attendance Zones Plan 5

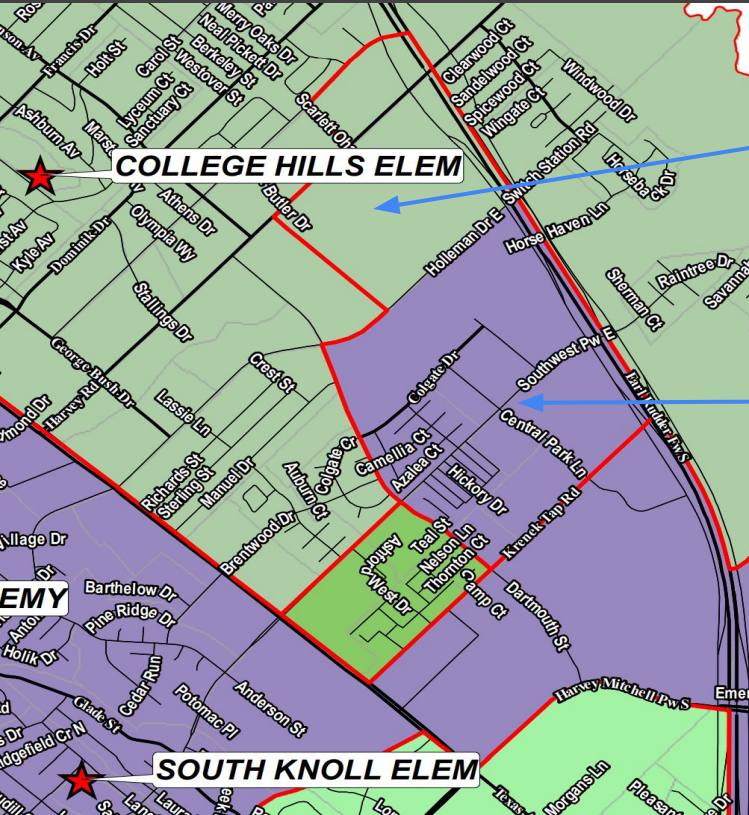


## LEGEND

- ★ Elementary
- ★ Intermediate
- ★ Middle
- ★ High School
- ★ Alternative
- 2024-25 Elementary Boundaries
- COLLEGE HILLS
- CREEK VIEW
- FOREST RIDGE
- GREENS PRAIRIE
- PEBBLE CREEK
- RIVER BEND
- ROCK PRAIRIE
- SOUTH KNOLL
- SOUTHWOOD VALLEY
- SPRING CREEK



# Elementary Zone Plan 5



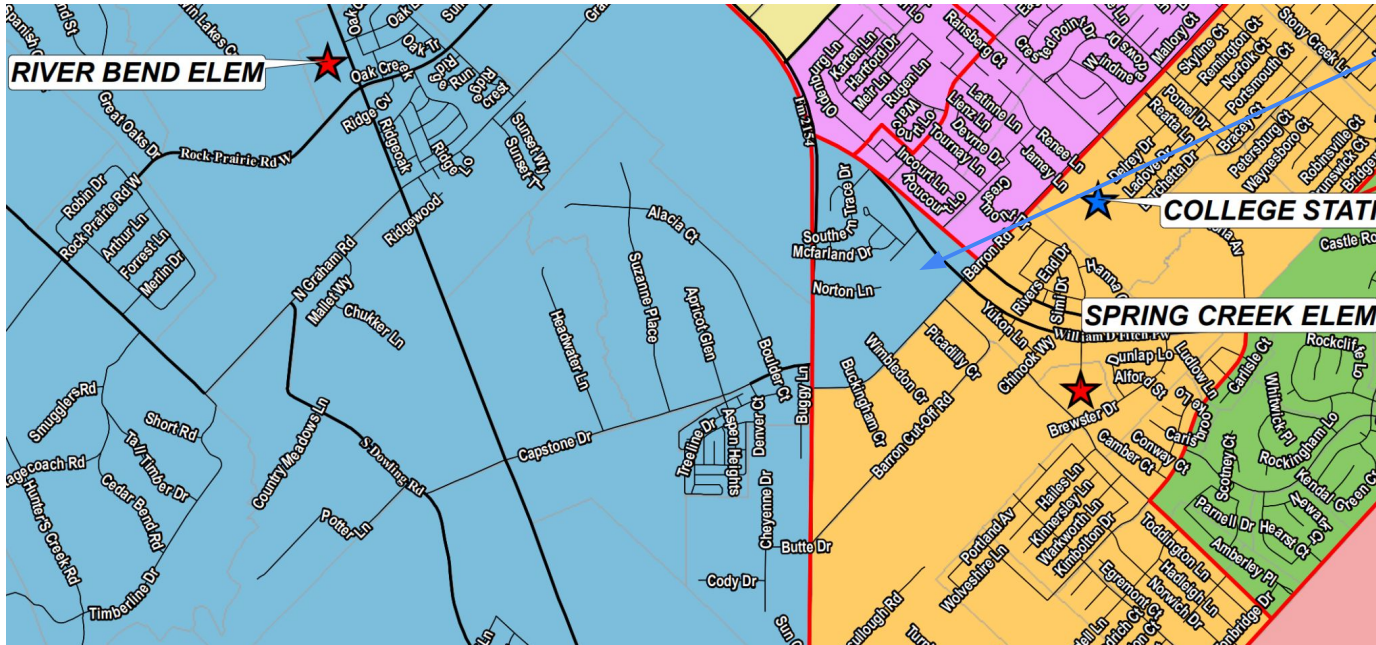
## College Hills Elementary

- Area North of Holleman Dr.

## South Knoll Elementary

- Area South of Holleman Dr. and North fo Krennek Tap Rd.

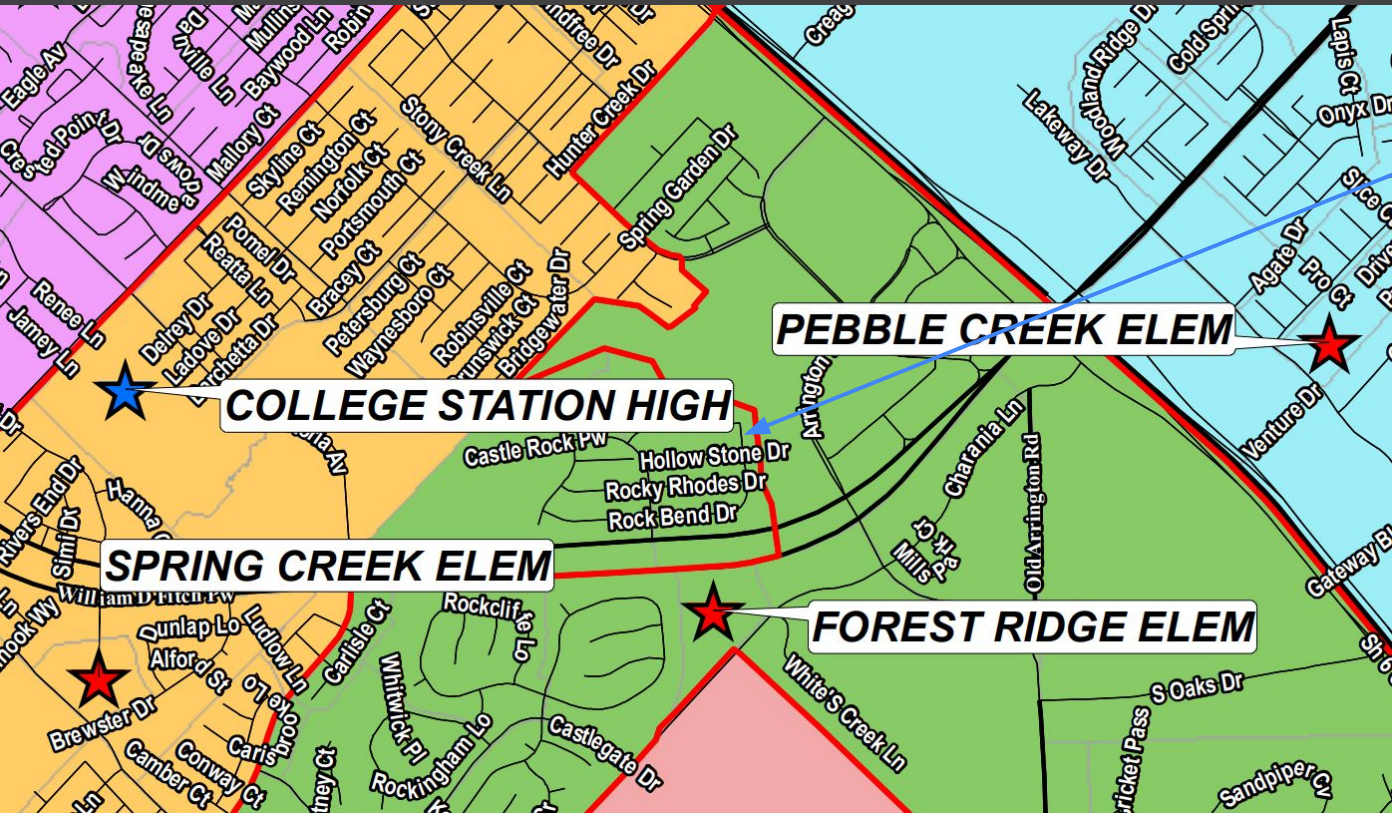
# Elementary Zone Plan 5



## River Bend Elementary

- Area between Wellborn Road and William D. Fitch, Southern Trace Drive Area

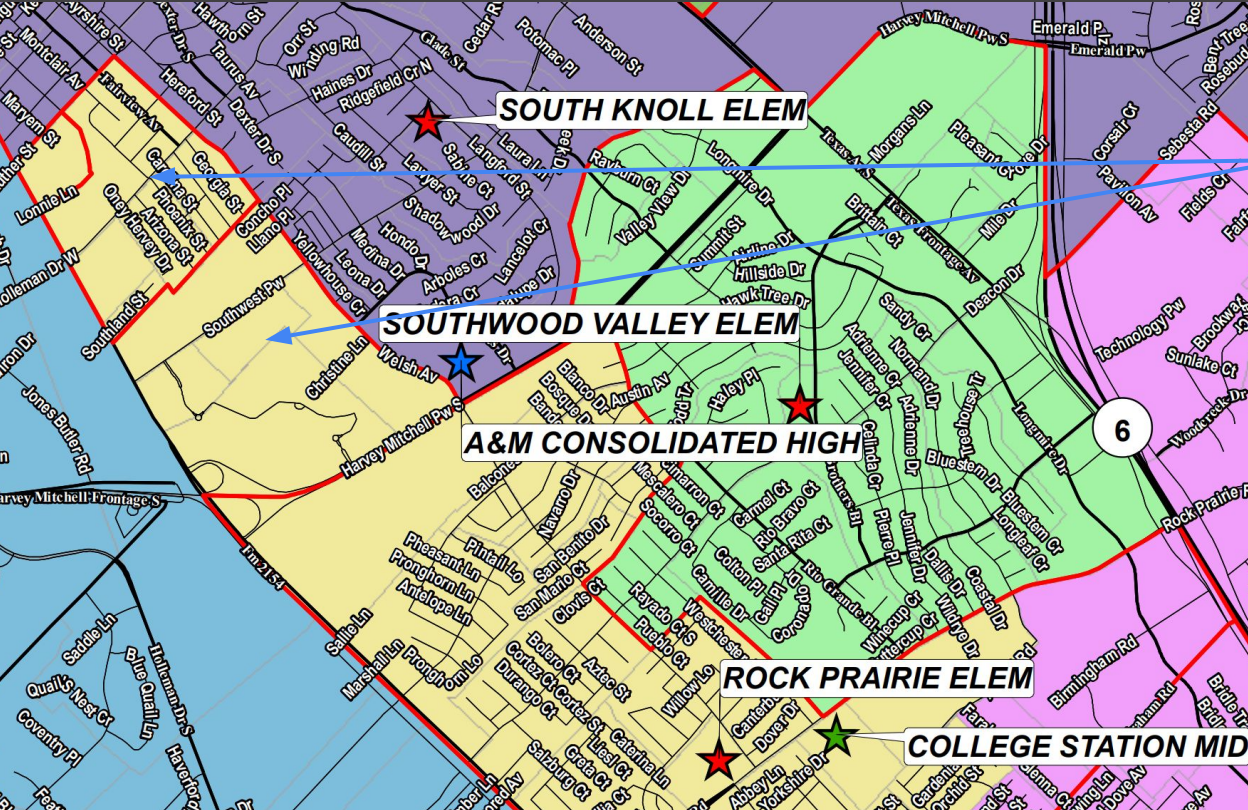
# Elementary Zone Plan 5



## Forest Ridge Elementary

- Area North of William D. Fitch, Castle Rock Area

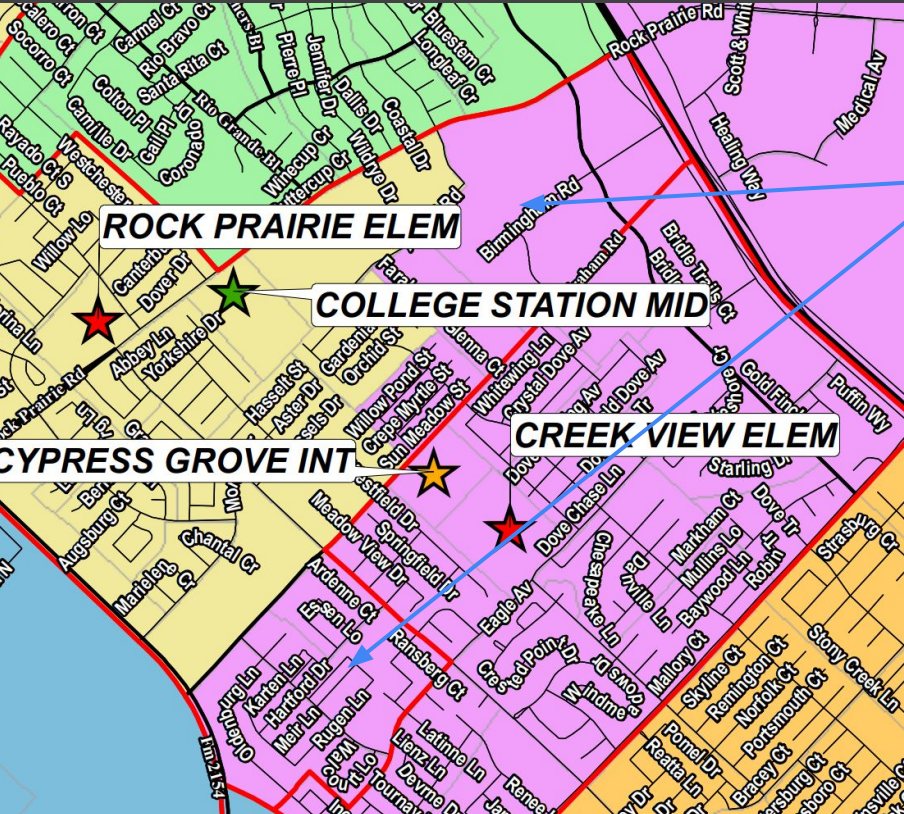
# Elementary Zone Plan 5



## Rock Prairie Elementary

- Large Area North of Harvey Mitchell Parkway

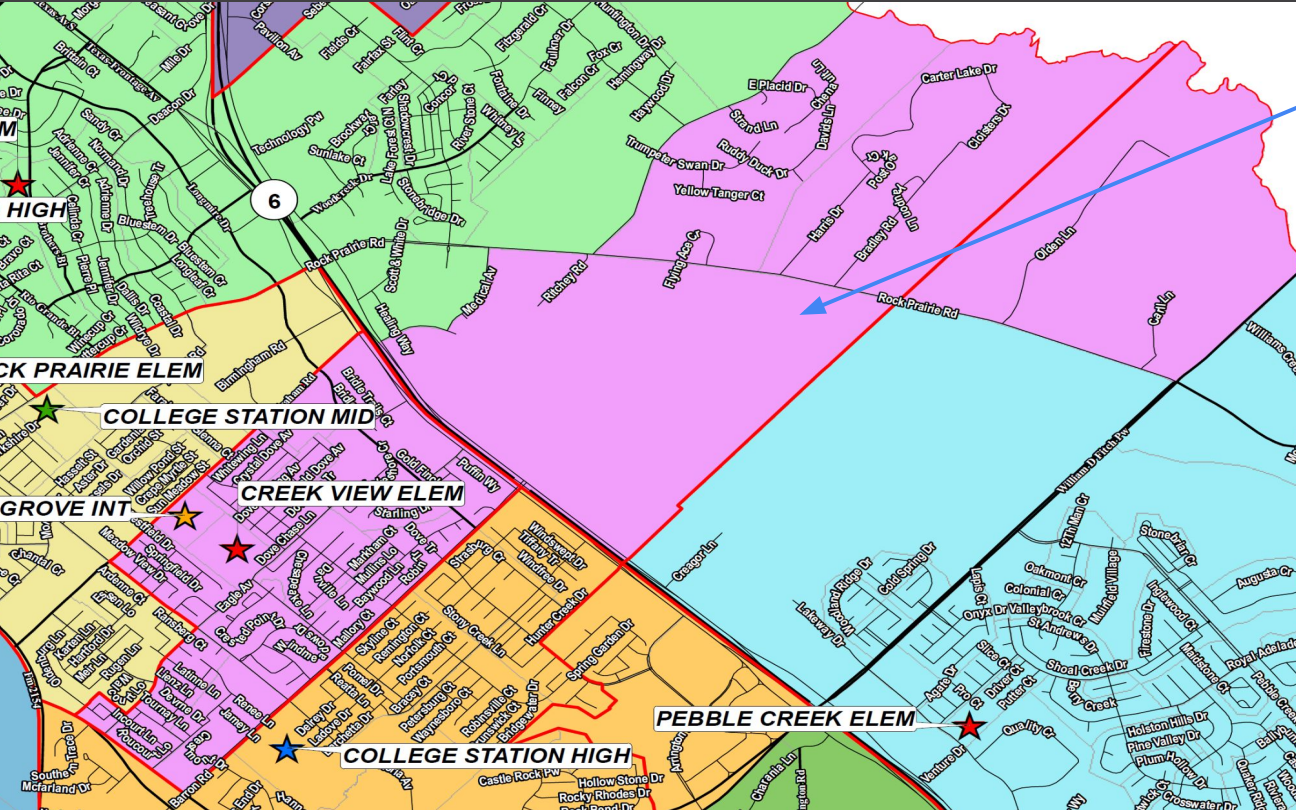
# Elementary Zone Plan 5



## Creek View Elementary

- Area Southeast side of Graham Road between Eagle Ave. and Victoria Ave.
- Area Northeast of Graham Road between Arnold Rd. and Normand Drive

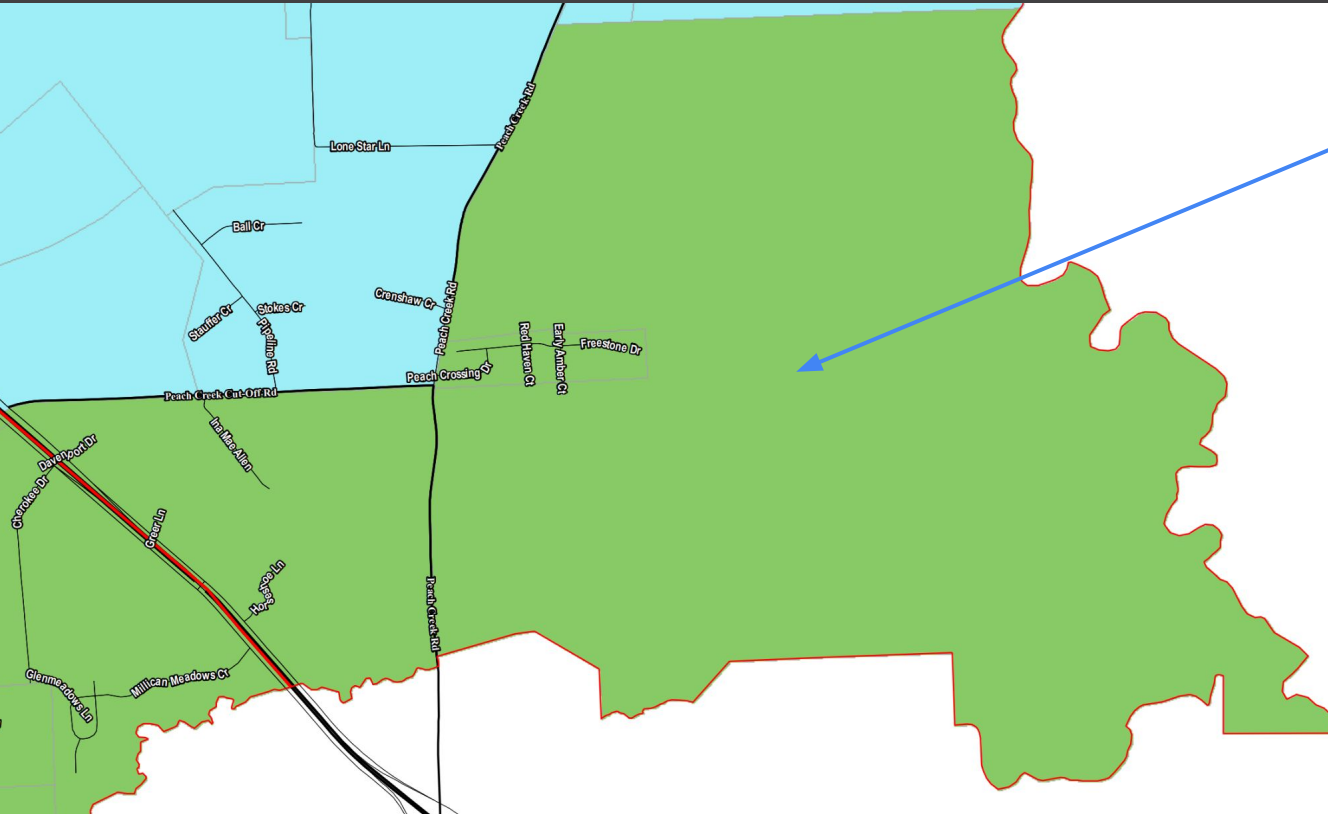
# Elementary Zone Plan 5



## Creek View Elementary

- Extends across Hwy 6
- Midtown Reserve Area
- Area East of Rock Prairie Rd & North of William D. Fitch parkway

# Elementary Zone Plan 5



## Forest Ridge Elementary

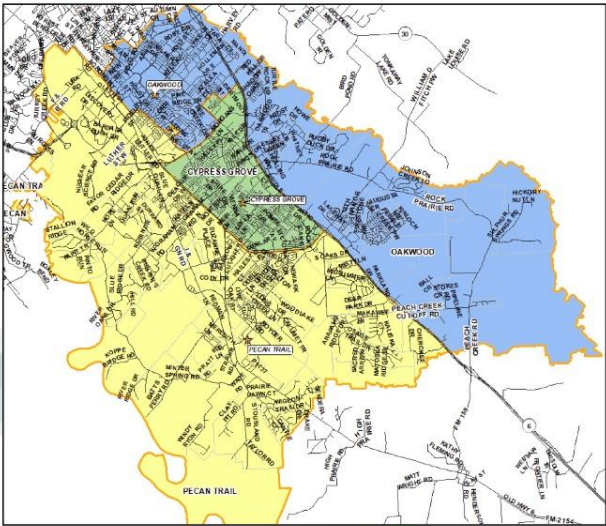
- Extends across Hwy 6
- Area South of Peach Creek Cut Off Road and then East of Peach Creek Rd

SCHOOL	CURRENT		PLAN 1		PLAN 4		PLAN 5	
	ED	%ED	ED	%ED	ED	%ED	ED	%ED
COLLEGE HILLS	438	73.0%	438	73.0%	459	73.4%	438	74.4%
CREEK VIEW	255	58.4%	274	54.6%	284	58.6%	255	45.7%
FOREST RIDGE	132	27.0%	99	18.3%	154	25.9%	132	22.2%
GREEN PRAIRIE	71	13.9%	75	13.1%	71	13.9%	71	13.9%
PEBBLE CREEK	177	28.2%	151	30.4%	155	29.6%	177	15.6%
RIVER BEND	277	53.1%	277	53.1%	277	53.1%	277	52.7%
ROCK PRAIRIE	330	61.6%	330	61.6%	330	61.6%	330	71.4%
SOUTH KNOLL	387	69.0%	429	70.4%	387	69.0%	387	68.8%
SOUTHWOOD VALLEY	406	61.9%	389	64.0%	395	62.8%	406	66.2%
SPRING CREEK	191	27.4%	202	31.2%	152	23.4%	191	24.1%
TOTAL	2,664	47.3%	2,664	47.3%	2,664	47.3%	2,664	47.3%

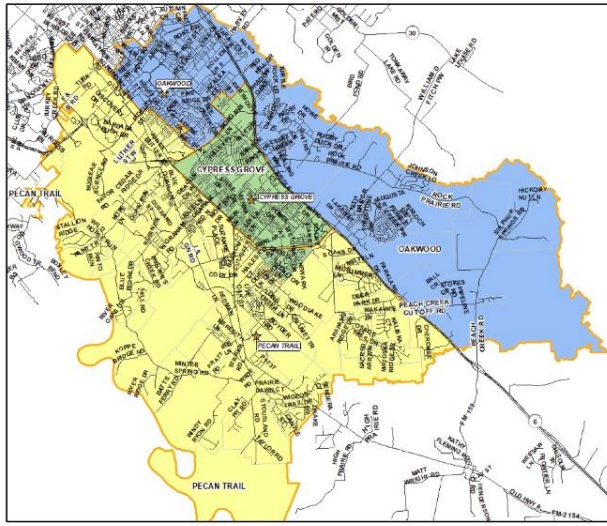


# Intermediate & Middle School Attendance Zone Considerations

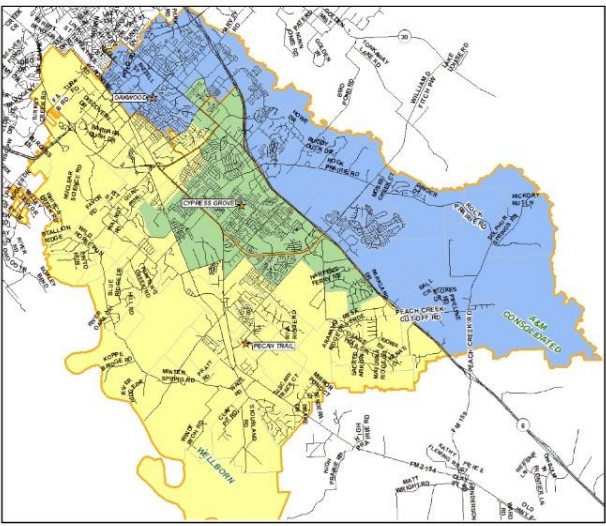
Current Zones –



Proposed Plan 3 Zones –



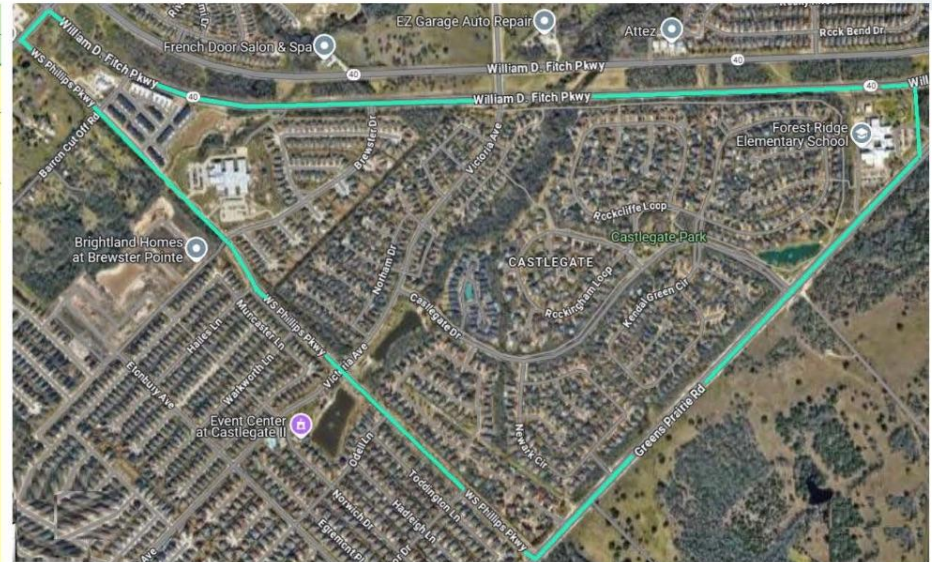
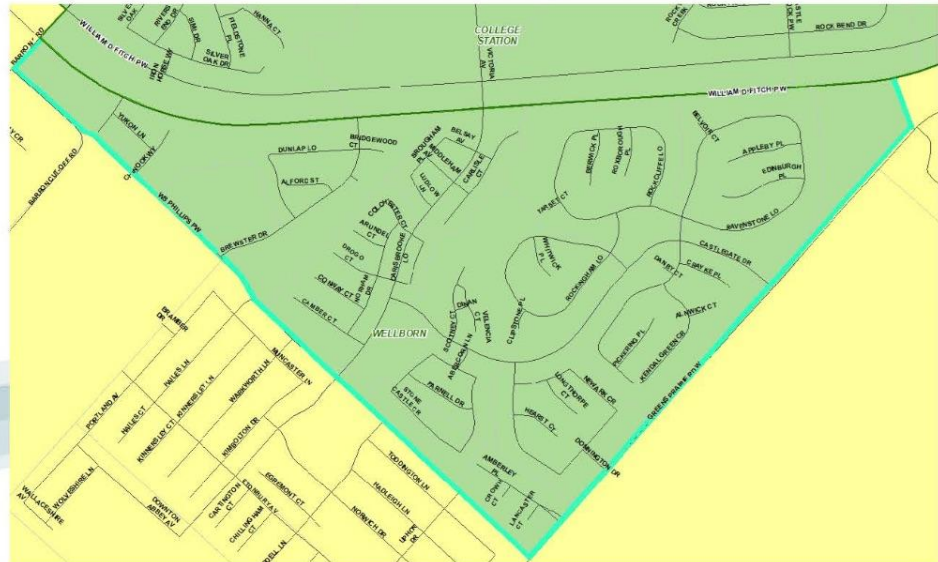
Proposed Plan 4 Zones –





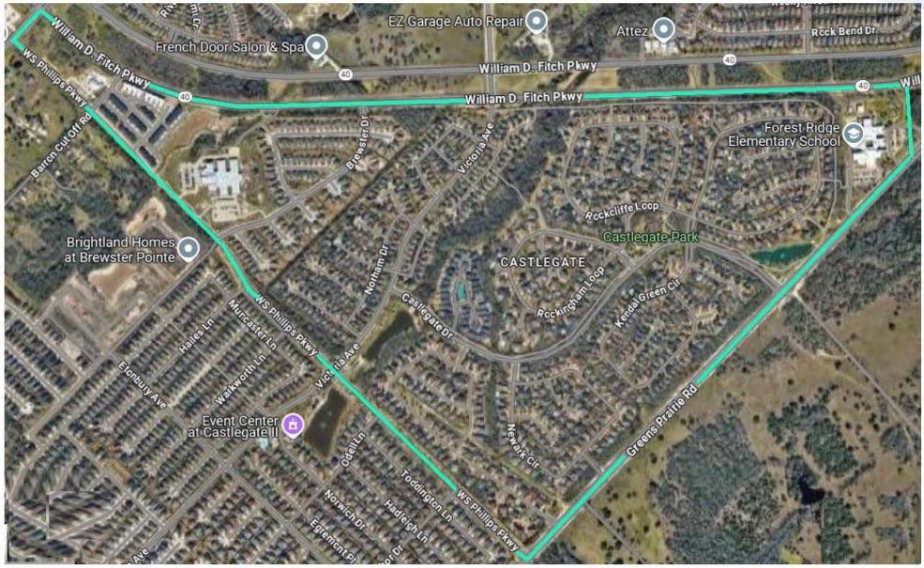
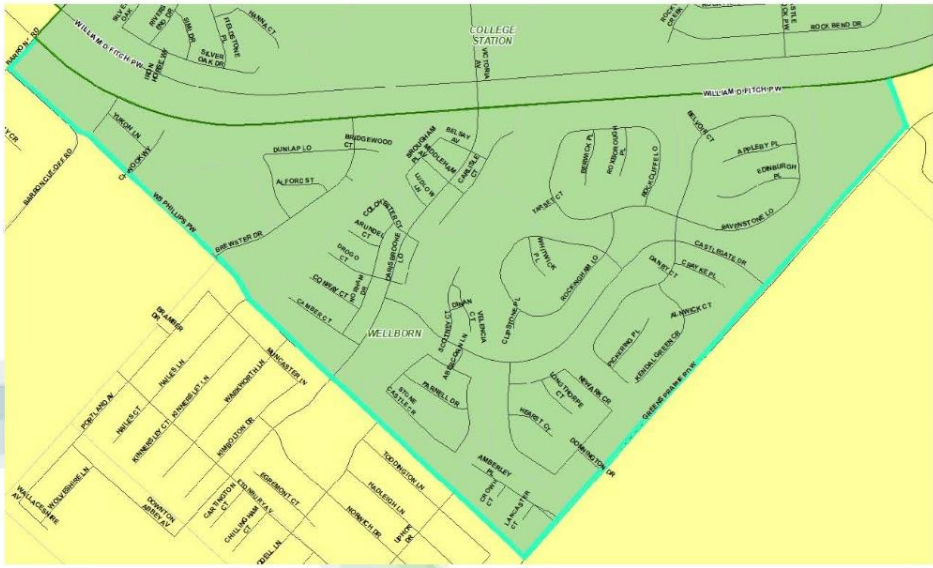
# Attendance Zone Consideration

Plan 3 Attendance Zone Area – Proposing to move from Pecan Trail Intermediate & Wellborn Middle School to Cypress Grove Intermediate & College Station Middle School



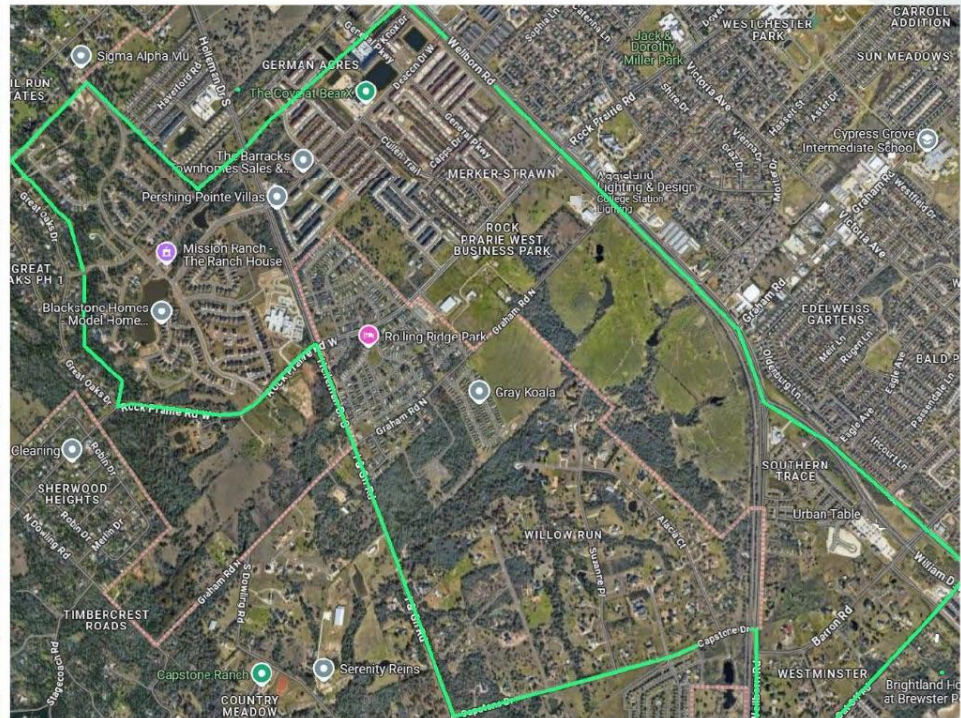
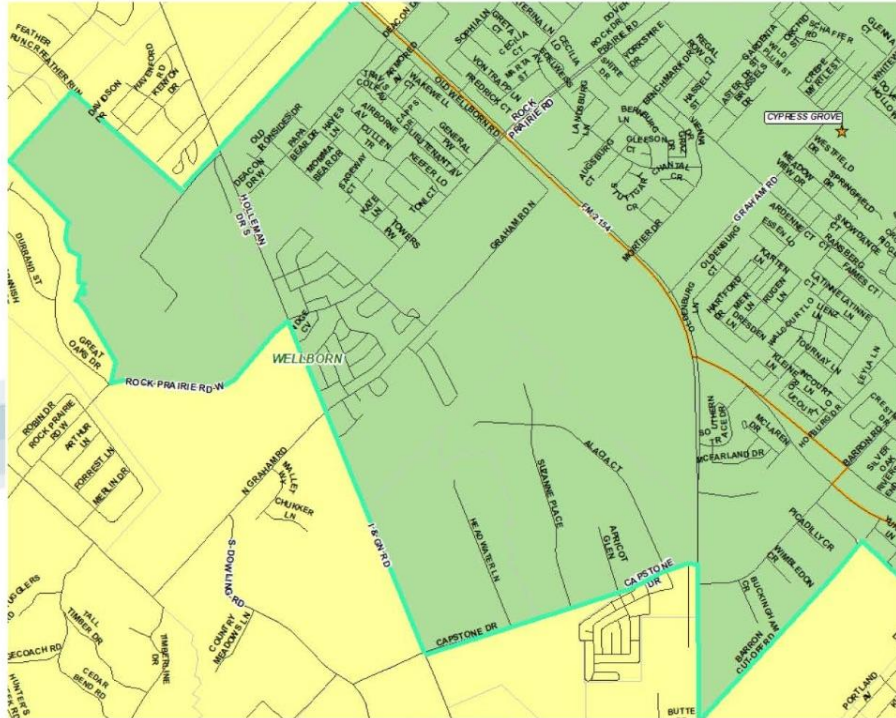
# Attendance Zone Consideration

Plan 4 Attendance Zone Area – Proposing to move from Pecan Trail Intermediate & Wellborn Middle School to Cypress Grove Intermediate & College Station Middle School



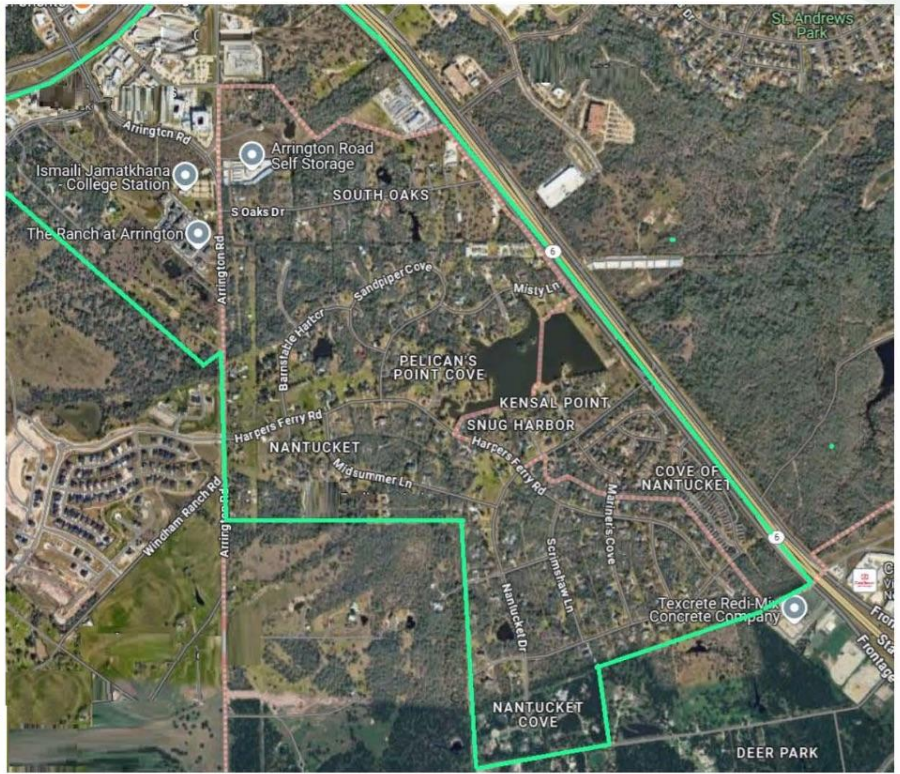
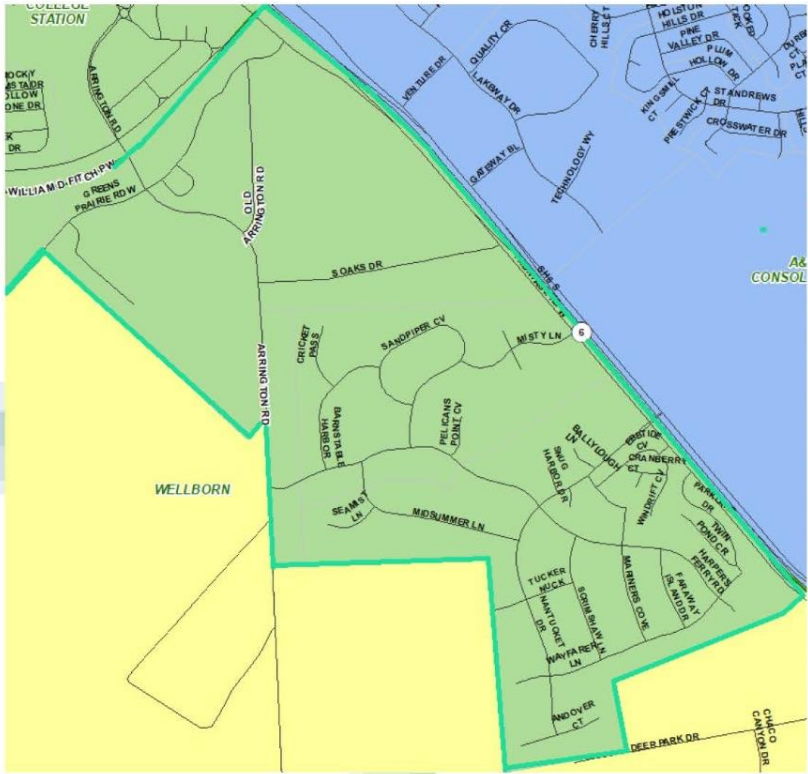
# Attendance Zone Consideration

Plan 4 Attendance Zone Area – Proposing to move from Pecan Trail Intermediate & Wellborn Middle School to Cypress Grove Intermediate & College Station Middle School



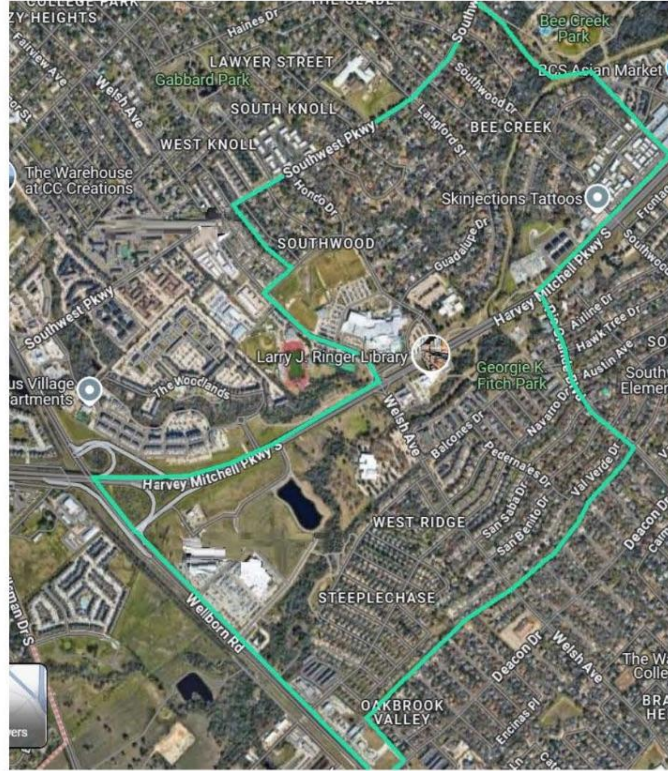
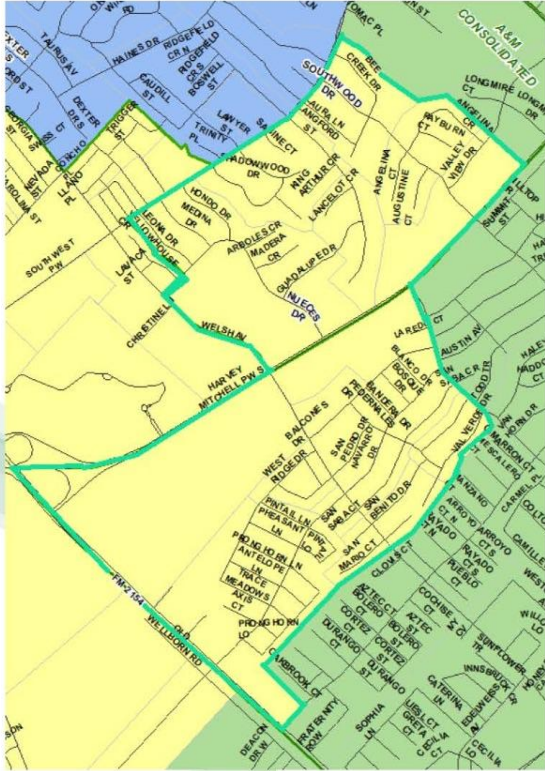
# Attendance Zone Consideration

Plan 4 Attendance Zone Area – Proposing to move from Pecan Trail Intermediate & Wellborn Middle School to Cypress Grove Intermediate & College Station Middle School



# Attendance Zone Consideration

Plan 4 Attendance Zone Area – Proposing to move from Cypress Grove Intermediate & College Station Middle School to Pecan Trail Intermediate & Wellborn Middle School



# Community Feedback (As of 7/14/25)



## 1,024 Total Comments

- ES Plan 1: **143 Comments**
- ES Plan 4: **158 Comments**
- ES Plan 5: **216 Comments**
- INT/MS: Plan 3: **289 Comments**
- INT/MS Plan 4: **236 Comments**

**ES Plan 5 more favored than 1 & 4**

**INT/MS Plans received mixed reviews based on impact and ED%**

## Most Common Topics

- High-resolution maps
- Explanatory notes
- ED% for elementary plans
- Social disruption
- Transportation, traffic, travel time
- Grandfathering

## **Transportation, traffic, commute, proximity to school**

- Castlegate II (SCE to GPE - Plan 1)
- WCLE (PCE to CVE - Plans 1 & 5)
- Castlegate/Nantucket/South Hampton (INT/MS Plans) - WDF and Victoria Ave.
- Steeplechase/West Ridge Area (OW/AMCMS to PT/WMS - INT/MS Plan 4)
- SWV east of Hwy. 6 (ES Plans)

## **Impact on Enrollment**

- Southern Pointe (ES Plans - PCE to FRE)

## **Feeder Patterns**

- Southern Pointe (ES Plans - PCE to FRE)
- Mission Ranch (INT/MS Plan 4)

## **Balancing ED% vs. Neighborhood Schools**

# Areas Frequently Mentioned



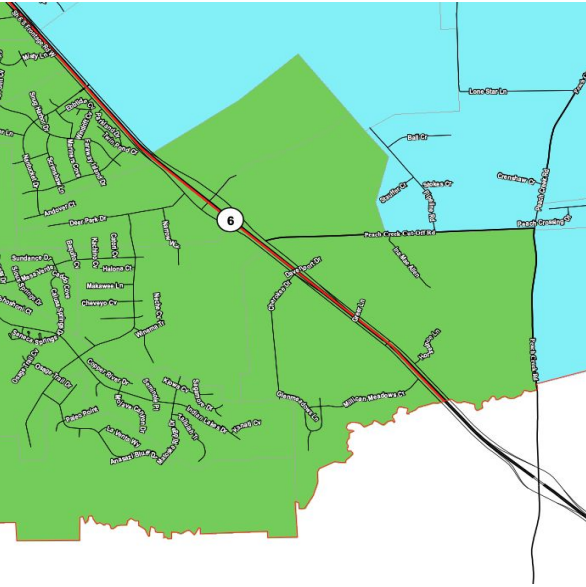
## ES Plans

- Williams Creek Lakes Estates
- Southern Pointe
- Castlegate II
- Greens Prairie Reserve
- SWV Zone East of Hwy. 6
- SCE “Triangle”
- PCE “Island”

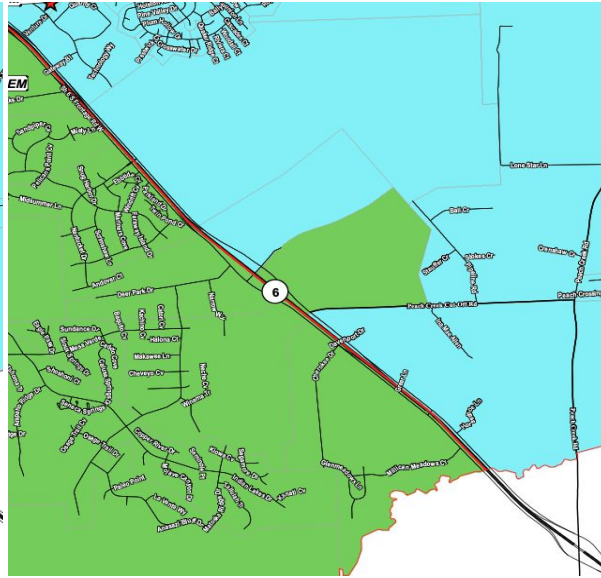
## INT/MS

- Castlegate
- Mission Ranch
- Nantucket
- South Hampton
- Steeplechase/West Ridge
- Southwood

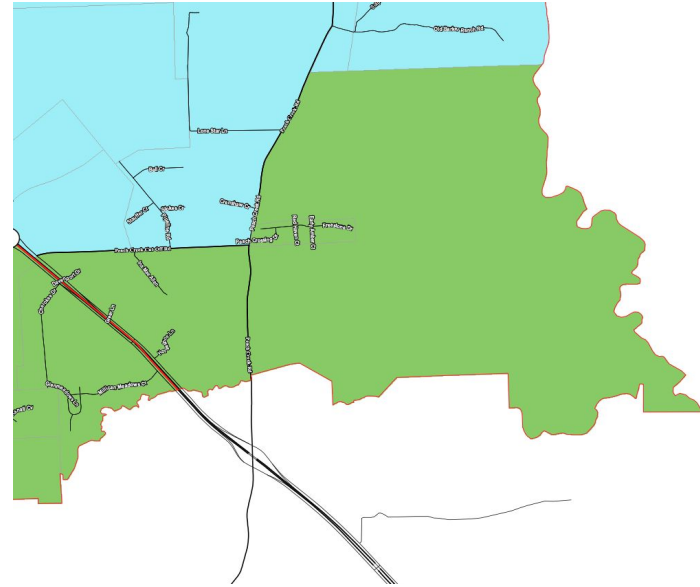
# ES Plans: Southern Pointe Area



Plan 1

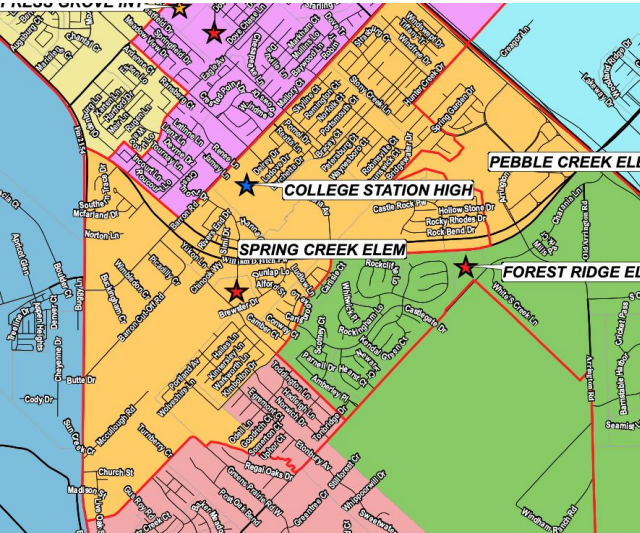


Plan 4

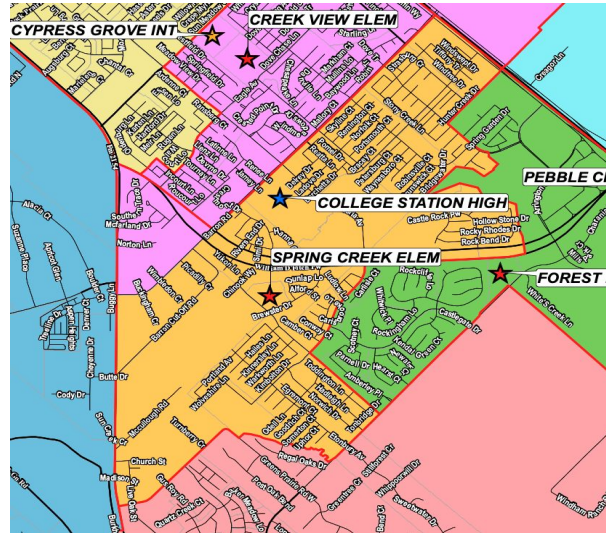


Plan 5

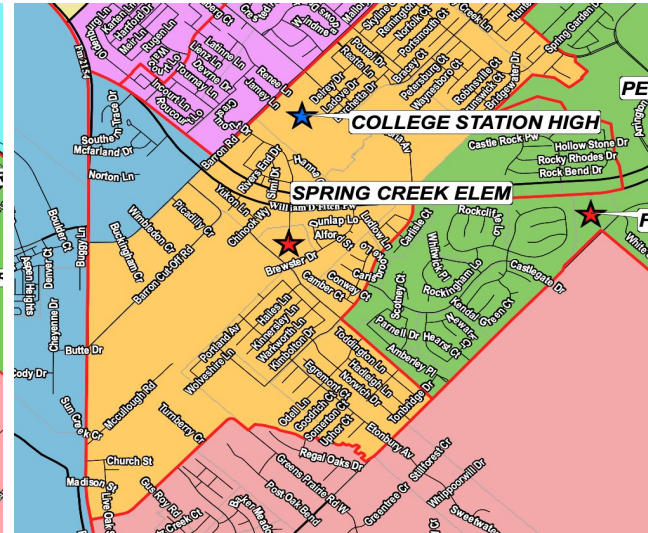
# ES Plans: Castlegate Area



Plan 1

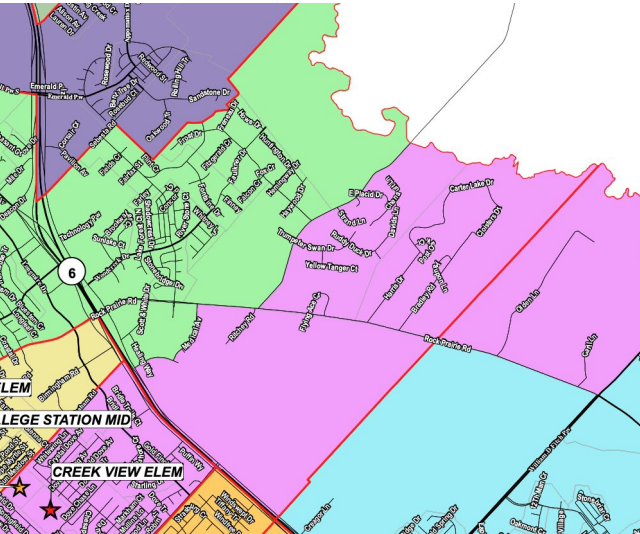


Plan 4

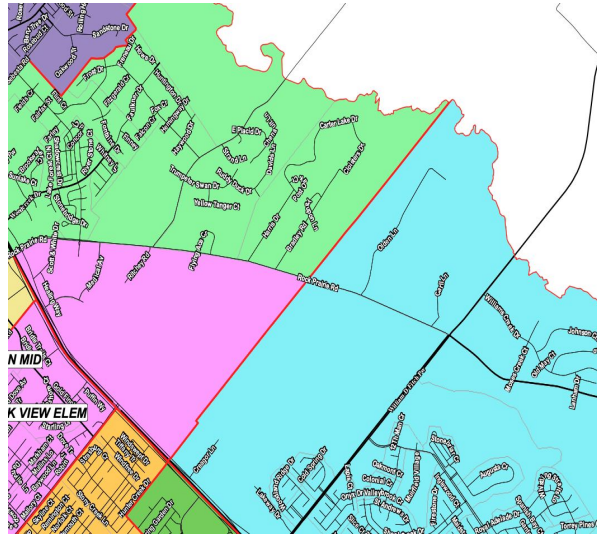


Plan 5

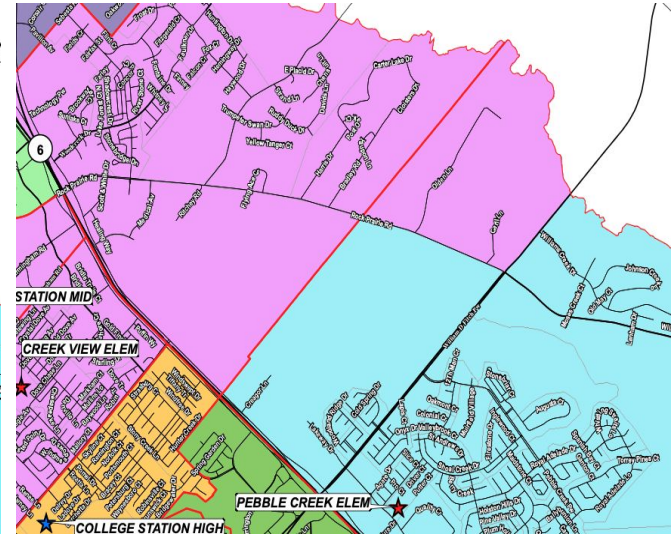
# ES Plans: SWV/CVE/PCE



Plan 1

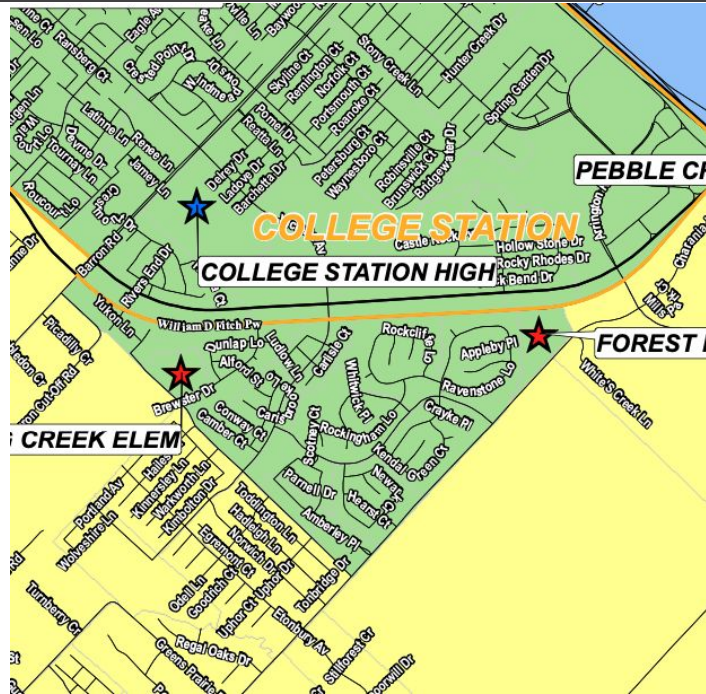


Plan 4

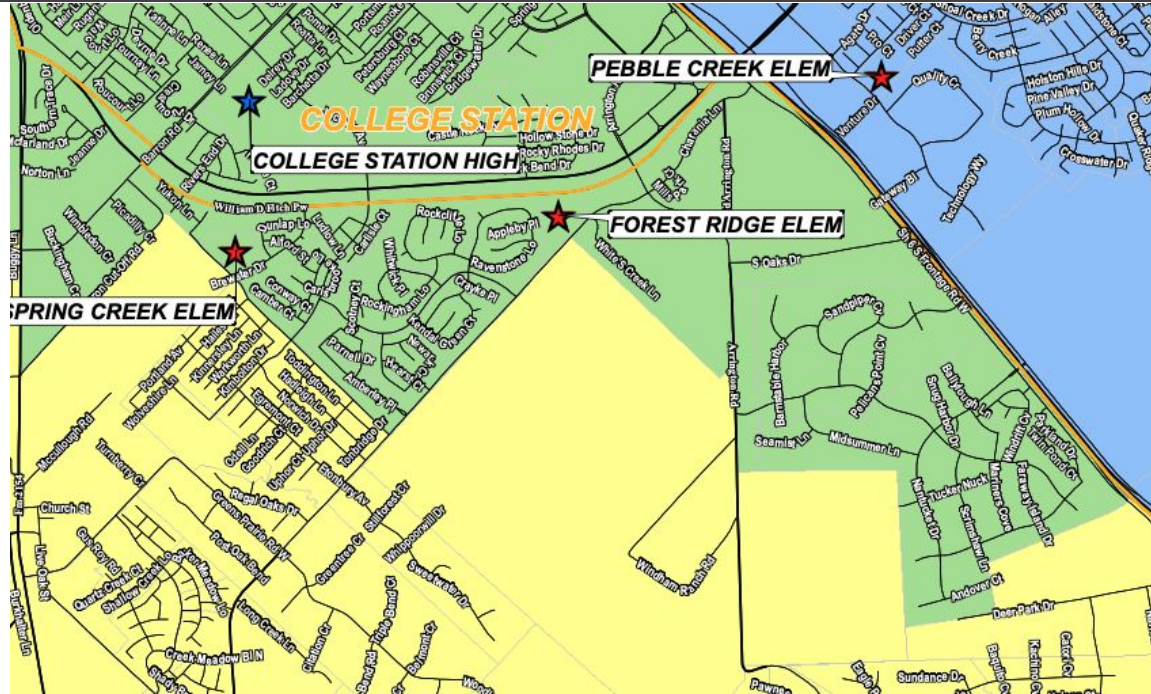


Plan 5

# INT/MS Plans: South College Station

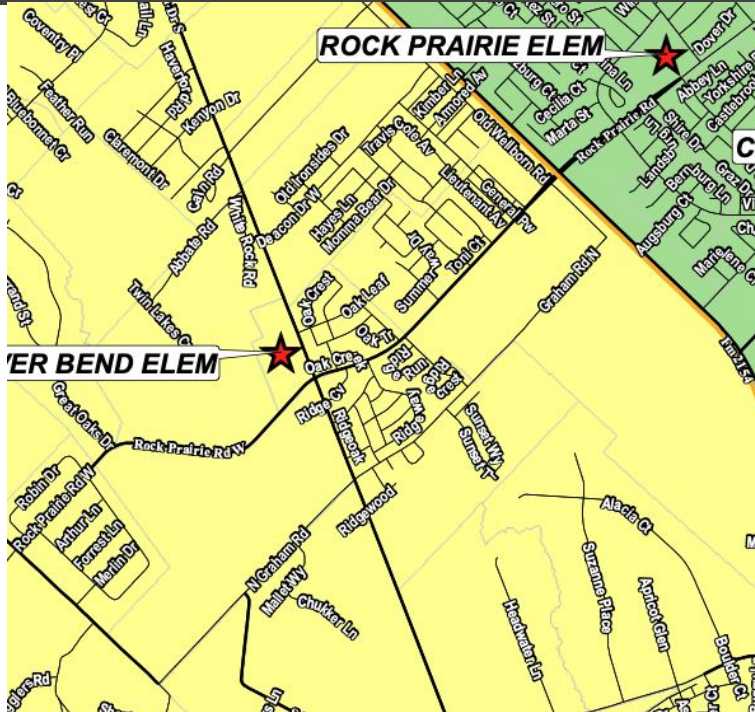


Plan 3

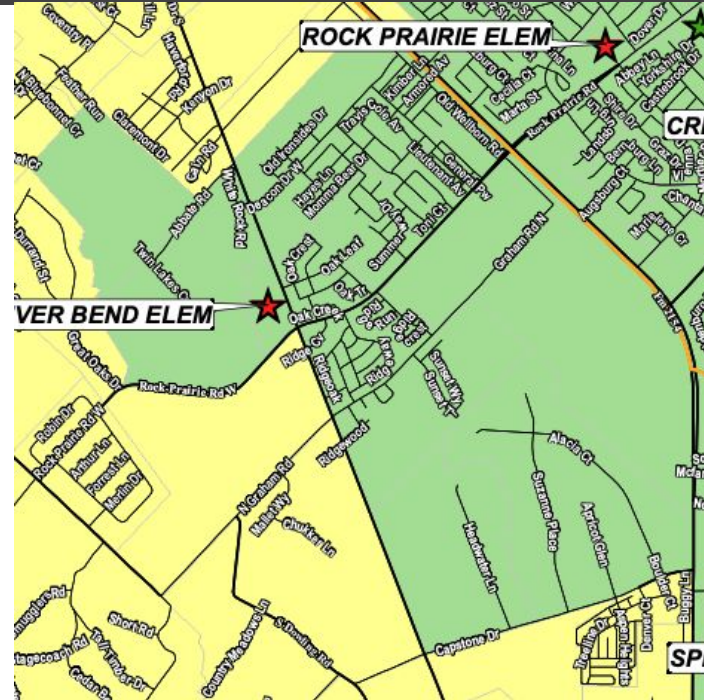


Plan 4

# INT/MS Plans: Mission Ranch Area



Current



Plan 4

## **July/August**

- Continue to review feedback
- Review enrollment in affected areas
- Make adjustments as needed

## **August Board Meeting**

- Review updates and feedback

**Questions/Comments?**

